



*Coquelle Trails: Mapping an Unknown Past
1826 - 1856*

Presented by Dr. Bob Zybach, PhD.

www.ORWW.org

March 15, 2012

2012 Northwest Anthropological Conference

Wildhorse Resort & Casino

Pendleton, Oregon

2011-2012 Coquille Trails Research Project Team

**Coquille Indian Tribe
Cultural Resources Department**

Don Ivy

Robin Harkins

Nicole Norris

Jesse Davis

Project Leader

GIS Coordinator

Archaeologist

Field Research Assistant

Oregon Websites & Watersheds Project, Inc.

NW Maps Co.

Bob Zybach

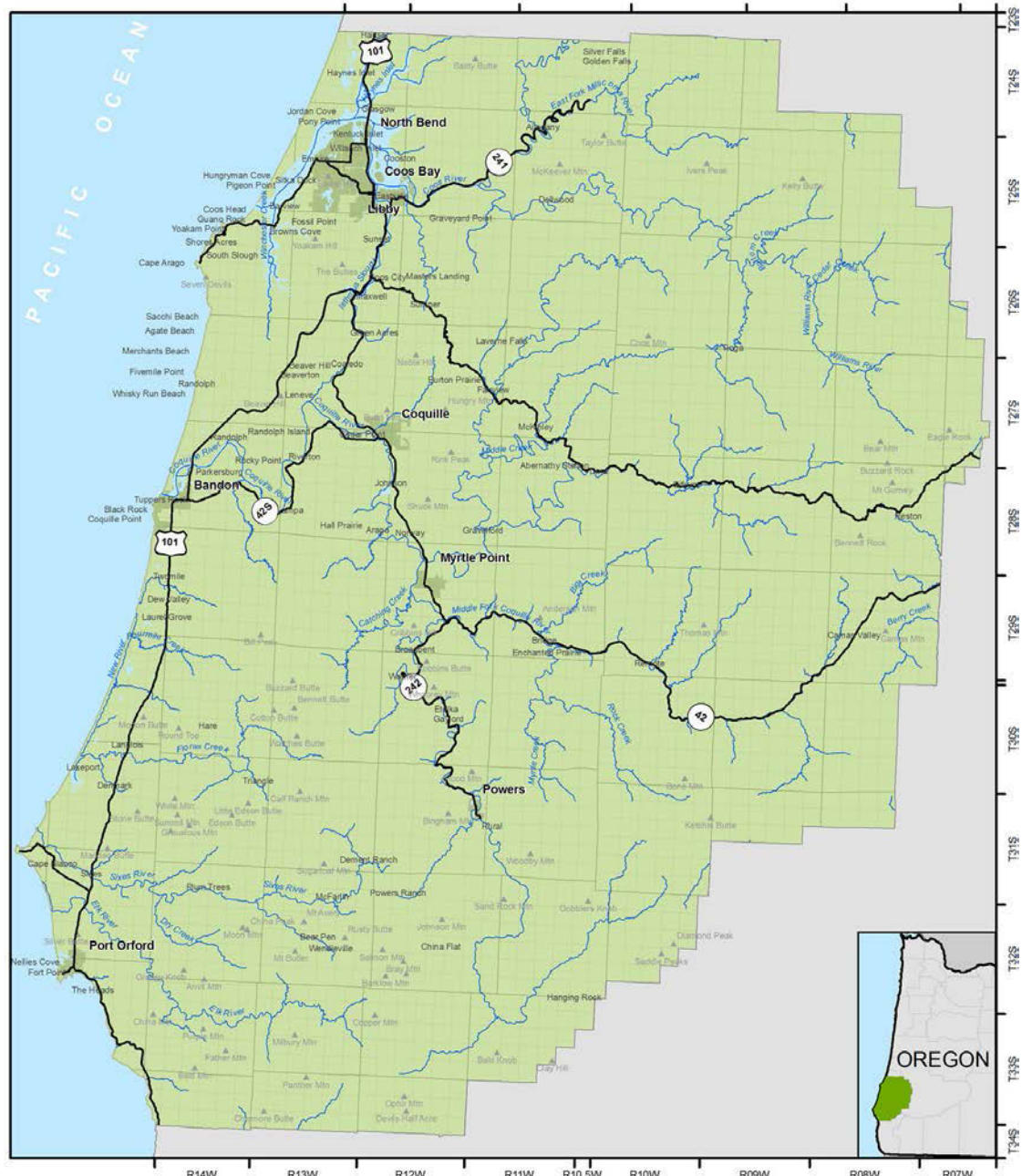
Crys Stephens

Principal Investigator

Office Research Assistant

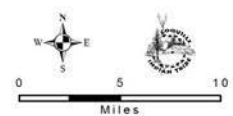
When Alexander Roderick McLeod first entered the country of Coos and Coquille people in October 1826, he had arrived in a land almost completely unknown to the outside world. There were no maps, written or verbal accounts, or even known landmarks -- excepting the seacoast -- for the entire area . . .

In 1826 there were no pack trails or wheeled vehicles in the entire Coos or Coquille river basins. Transportation was by foot or canoes. A clear line of demarcation between these modes of travel was the head of tidewater in Coos Bay and its sloughs; in Coos River; and in Coquille River and its sloughs.



Map produced by Coquille Indian Tribe's GIS Program, January, 2012
 Projection: Oregon State Plane South NAD83 HARN
 Data: Coquille Indian Tribe, BLM, ORGeo

This product is for informational purposes and may not have been prepared for, or be suitable for legal, engineering, or surveying purposes. Users of this information should review or consult the primary data and information sources to ascertain the usability of the information.



- Legend**
- Highways & Major Roads
 - Study Area
 - City Limits



TO INDIAN

↑ TRAIL 1573

Sunday 7th. Fine weather, till midday when heavy rain and occasionally hail came on, accompanied by high S.W. wind – with the rising sun six men and self on board of a canoe, descended the [Coquille] river to its confluence with the Ocean, from hence afoot along the beach [South] about 14 miles and sixteen by water, passed a small river by the natives (*Chiste etudi*) formed our Camp near where our people were lately trapping, on the border of an extensive marsh or swamp.

-- Alexander McLeod, January 7, 1827

U. S. G. S.
FILE COPY

U.S. GEOLOGICAL SURVEY
CHARLES D. WALCOTT,
DIRECTOR

TOPOGRAPHIC SHEET

OREGON
(COOS CO.)
COOS BAY QUADRANGLE

CONVENTIONAL SIGNS

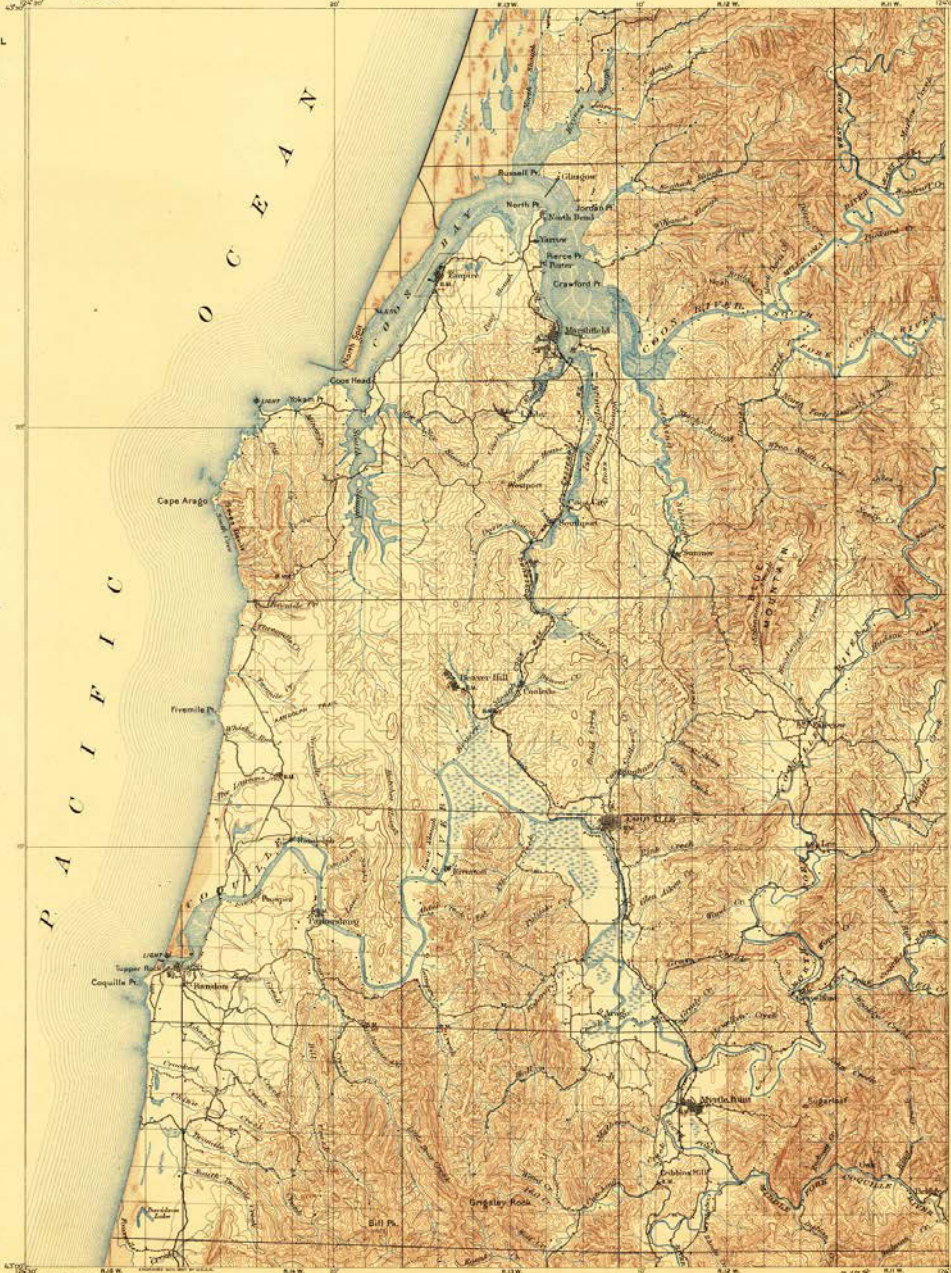
CULTURE
(printed in black)

- Rocky and brackish
- Dry and secondary roads
- Trails
- Railroads
- Spur railroads
- Tunnels
- Bridges
- Ferries
- Ferries
- Ferries
- Dams
- Leeks
- U.S. township and section lines
- Locust township and section corners
- Township and section corners not found
- Triangulation stations
- Bench marks
- Mines and quarries
- Prospects
- Shanks
- Minor tunnels (dashed outlines)
- Minor tunnels (solid outlines)

CONVENTIONAL SIGNS

RELIEF
(printed in brown)

- Figures (shown in brown) showing elevation above mean sea level
- Contours (shown in brown) showing height above and below mean sea level
- Intermittent contours
- Levees
- Cliffs
- Mine dumps
- Streams (printed in blue)
- Falls and rapids
- Intermittent streams
- Creeks and ditches
- Lakes and ponds
- Intermittent lakes
- Glaciers
- Springs
- Salt marshes
- Food marshes
- Tidal flats



U.S. Geologic Geographer in charge
Transferring by W. L. Tolson
Topography by G. L. Bernard
Surveyed in 1895-96

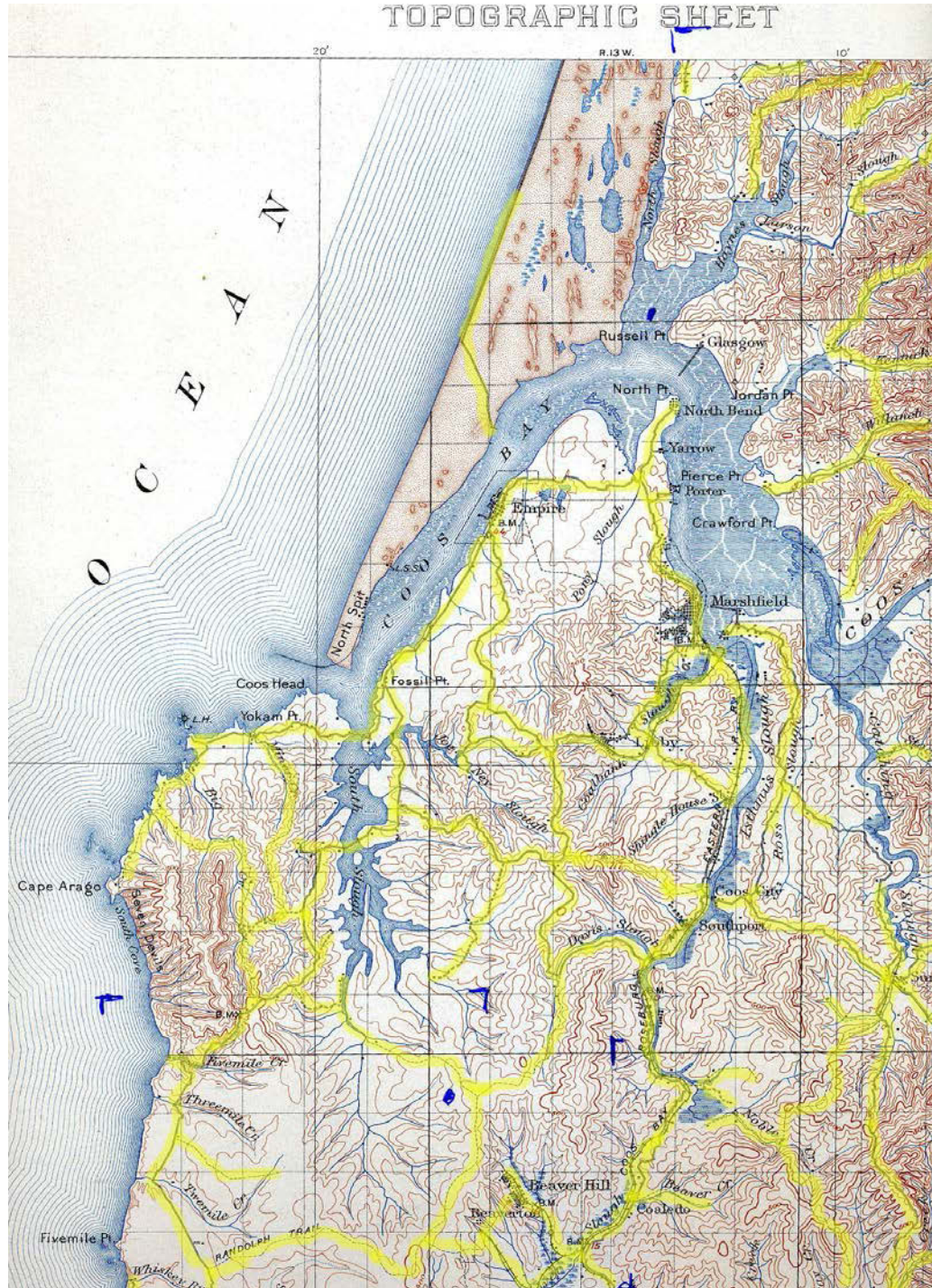
U. S. G. S.
FILE COPY

Scale: inches
0 1 2 3 4 5
0 1 2 3 4 5
Miles
Contour interval 200 feet
Adapted to metric units

U.S.G.S.
Historical File
Topographic Division

March 27-1898
2128
Coos Bay, Oreg.

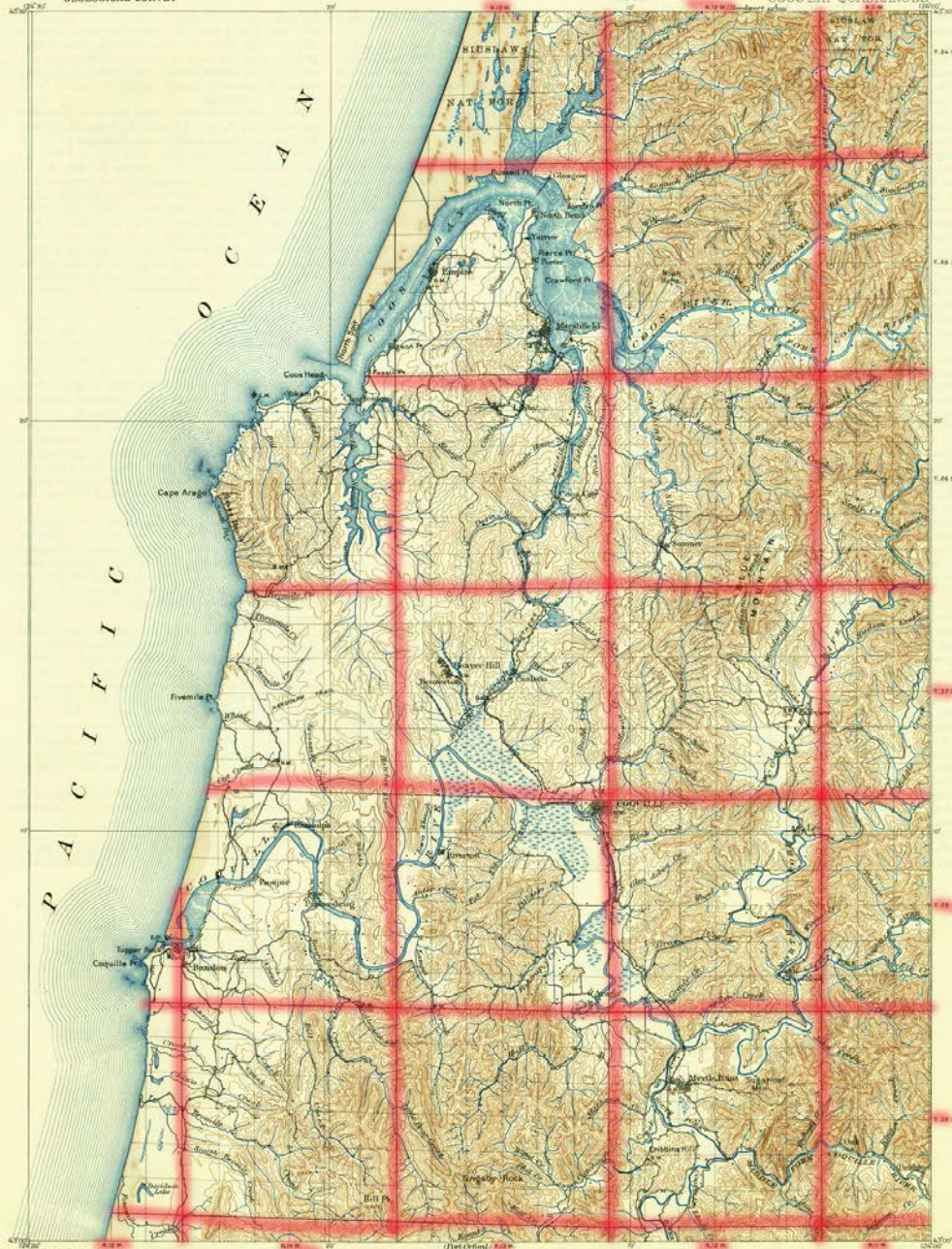
TOPOGRAPHIC SHEET



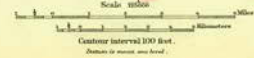
UNITED STATES
DEPARTMENT OF THE INTERIOR
GEOLOGICAL SURVEY

U.S.G.S.
FILE COPY
Illustration and Printing

OREGON
(COOS CO.)
COOS BAY QUADRANGLE



H. U. Goad, Geographer in Charge,
Washington, D. C.
Topography by E. C. Barnard,
Surveyed in 1895-96.



U.S.G.S.
Historical File
Topographic Division

Edition of May 1905, reprinted 1937
Polyconic projection.

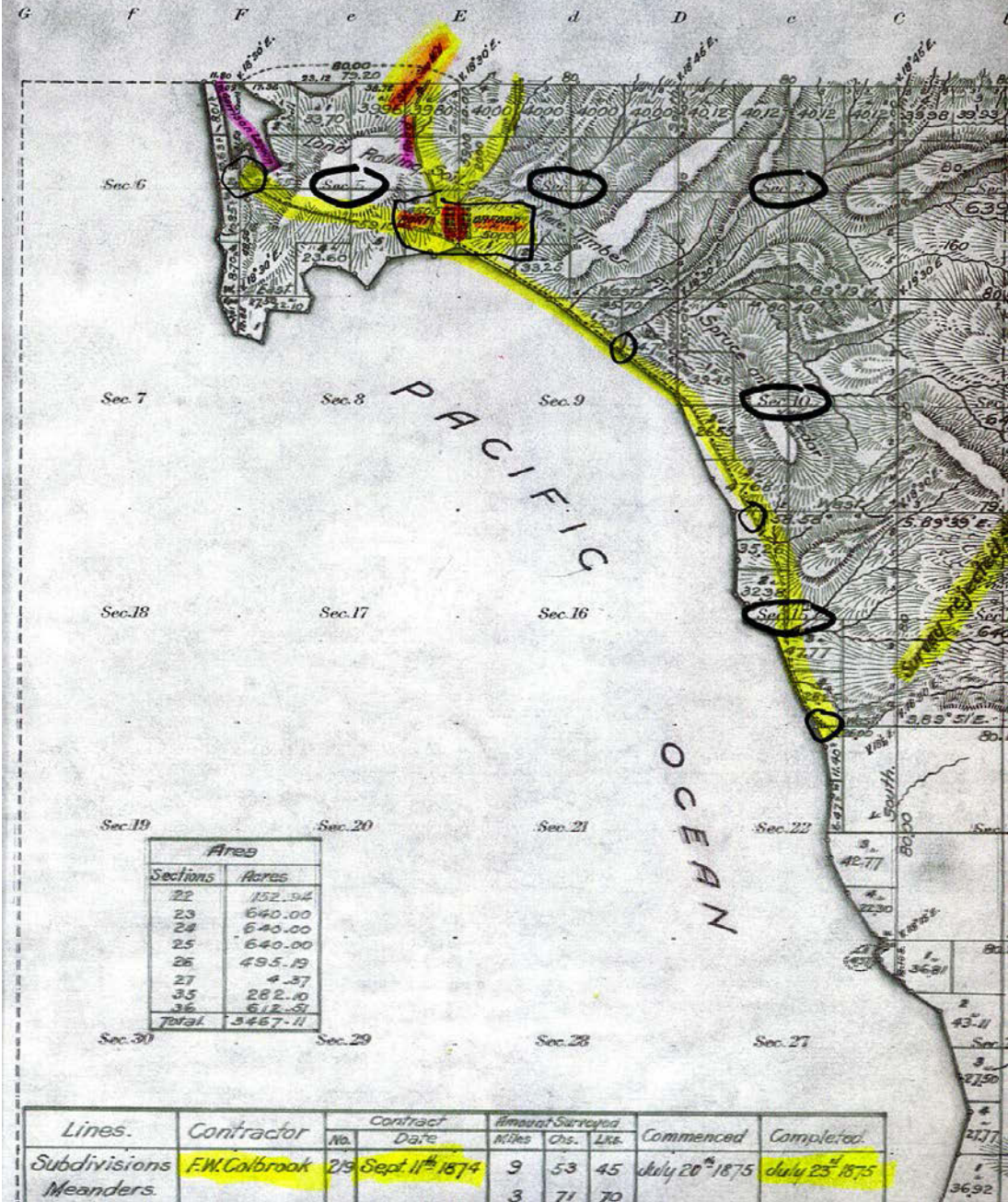
OREGON
COOS BAY

JAN 25 1964

U.S.G.S.
FILE COPY
Illustration and Printing

1035

Township N^o 33 South Range N^o 15 West, Willamette



Areas	
Sections	Acres
22	152.94
23	640.00
24	640.00
25	640.00
26	495.19
27	4.27
35	282.10
36	612.51
Total	3467.11

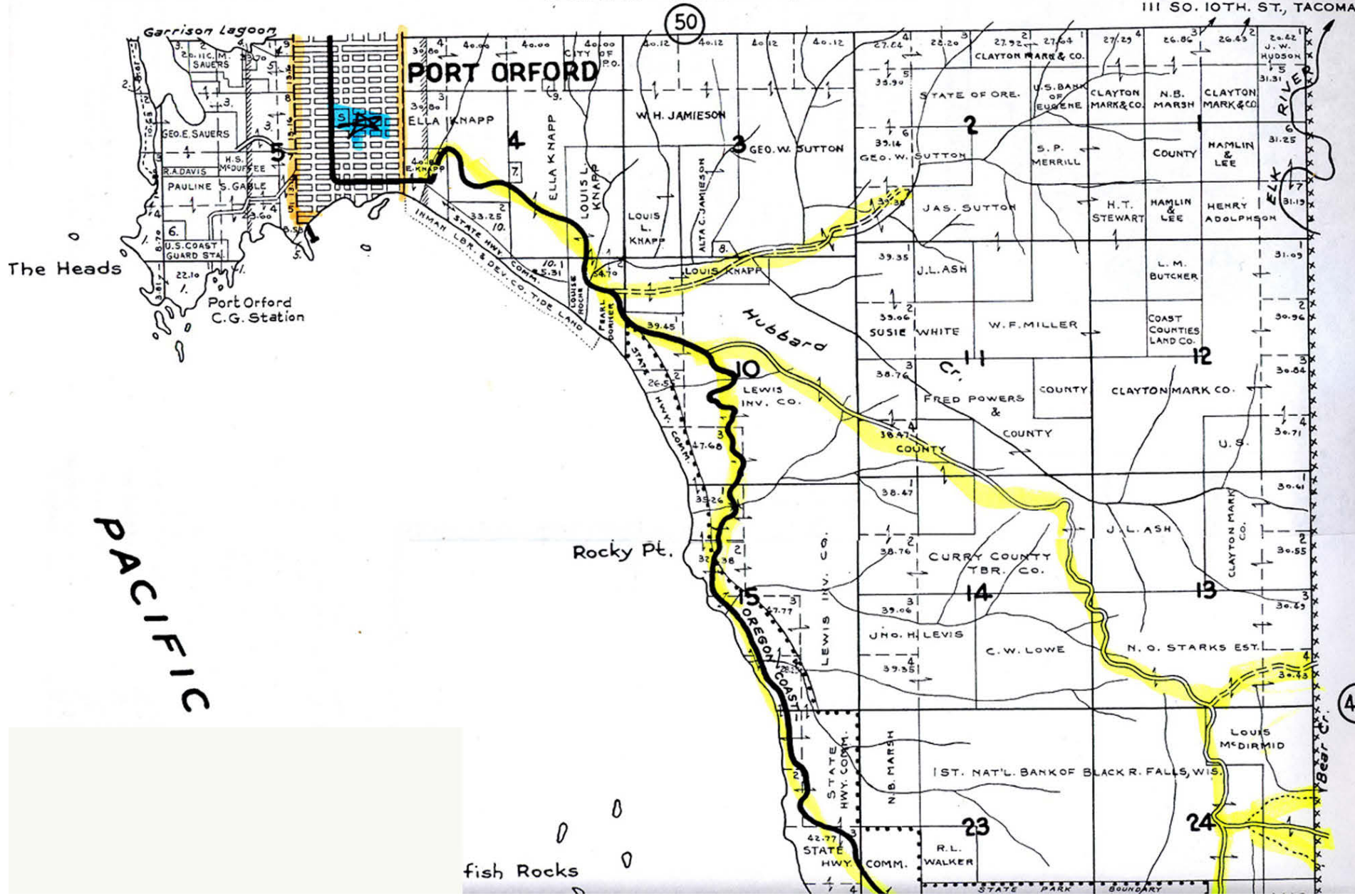
Lines.	Contractor	Contract		Amount Surveyed			Commenced	Completed
		No.	Date	Miles	Chs.	Lks.		
Subdivisions	F.W. Colbrook	29	Sept. 11 th 1874	9	53	45	July 20 th 1875	July 25 th 1875
Meanders.				3	71	70		

TOWNSHIP 33 S., RANGE 15 W.W. M.

CURRY COUNTY, OREGON

SCALE 2 IN. = 1 MILE

CHAS. F. METSKER, CIVIL
514 S.W. OAK STREET, PORTL
111 SO. 10TH. ST., TACOMA,



PACIFIC

fish Rocks

Dennis Hathorn, August 18, 1855

Subdivisions of T. 30 S. R. 9 W. W. W.

CHAINS		
	North on random bet. secs. 3 and 4.	
	Va. 19°E.	
40.00	Set temp. $\frac{1}{2}$ sec. post.	
78.90	Intersect N boundary, 97 lks. E of cor. S.0°42'E., on true line bet. secs. 3 and 4.	
28.55	Old Indian trail, course E and W.	level
32.30	"Clickatat trail", course E and W.	level
38.90	Set $\frac{1}{2}$ sec. post, from which A Fir, 8 ins. diam., bears N.64°E., 11 lks. dist. A Fir, 6 ins. diam., bears N.46°W., 10 lks. dist.	-15
57.25	Branch, 2 lks. wide, course SE.	-100
78.90	To cor. Land undulating. Soil 2nd rate. Timber principally fir, with some cedar, laurel and hemlock. Undergrowth, laurel, hazel, sallal, etc. Aug. 18th, 1855.	-150
<p>This township is mostly very hilly and mountainous, generally timbered with fir, cedar, hemlock, laurel and oak.</p> <p>Soil 2nd and 3rd rate.</p> <p>Several tributaries of the middle fork of Coquille head in this township and the main fork runs through it, but the valleys are very narrow. Only about $\frac{1}{2}$ the Eastern and Northeastern portion were deemed fit for settlement and cultivation.</p> <p>There are no settlers in the township.</p>		

Thursday 26th. Rained most part of the day very heavily. We took advantage of the ebb tide agreeable to our Guides desire. The obscurity of the night suggested the Idea of entrusting the management of our craft to our new Guests, who acquitted themselves handsomely course three miles west then turned to the south, up an inlet where we found an Indian family lodged; being out of danger we waited day light then proceeded as before.

-- Alexander R. McLeod, October 26, 1826

West, on North boundary of Sec. 5.

Va. $19\frac{1}{2}$ * E.

39.95 Branch, 3 lks wide, c. NW.

40.00 Set. $\frac{1}{2}$ Sec. post, from which

A Cedar, 18 in. dia., bears N.35*E., 21 lks.

A Hemlock, 6 in. dia., S.10*E., 31 lks.

56.00 Summit of ridge c. N.25*W. and S.25*E.

56.00 A blazed line and dim trail leading to tide.

+300

County Surveyor's Record, Douglas County, Oregon

5785

North Boundary of T. 28 S. R. 8 W.
Same Deputy and Contract.

CHAINS

water on Coos River. This trail follows a ridge, which divides the waters which flow into Coos Bay from those running South to the Coquille. The head of tide water on Coos River is said to be about 25 miles distant by this trail. So said by those who marked out the trail.

80.00

Set post, cor. Secs. 5 and 6, from which

A Fir, 30 in. dia., bears S.48*W., 53 lks.

A Fir, 36 in. dia., S.50*E., 46 lks.

Land, same as last mile.

**Dennis Hathorn,
July 13, 1855**

-300

County Surveyor's Record, Douglas County, Oregon
Dennis Hathorn,
July 21, 1855

West Boundary of T. 29 S., R 8 W., W.M.

CHAINS		
50.30	Dry bed of creek, 10 lks. wide.	level
53.50	Leave same, course SE.	level
53.50	John Storment's house bears SW.	
56.40	Enter W. P. Day's pasture, course E and W.	level
57.50	Enter middle fork of Coquille River.	-6
57.50	Same house bears S.75*W.	
59.00	Leave river, course SE.	+6
61.10	Same, course SW (six inches deep), 30 lks. wide.	-6
62.00	Enter prairie, course NE and SW.	+6
62.00	W. P. Day's house bears S.50*E., about 31 chs.	
80.00	Set post, cor. secs. 30, 31, 25 and 36, from which	level
	A W Oak, 36 ins. diam., bears N.76*W., 372 lks. dist.	
	A W Oak, 12 ins. diam., bears S.88*W., 319 lks. dist.	
	A W Oak, 6 ins. diam., bears N.75*E., 86 lks. dist.	
	An Alder, 20 ins. diam., bears S.0*15'E., 597 lks. dist.	
	Description of this, same as last mile.	
	<hr/>	
	South bet. secs. 31 and 36.	
		Va. 19 $\frac{1}{2}$ *E.
4.00	Leave pasture, course E and W.	level
4.00	leave prairie, course E and W.	level
8.00	Enter fir timber, course E and W.	level
10.08	Trail, course E and W.	level
18.50	Branch, 8 lks. wide, course NW.	level
20.48	Trail leading to intersection of forks of Coquille.	+10
40.00	Set $\frac{1}{2}$ sec. post, from which	+30
	A Fir, 36 ins. diam., bears N.42*W., 9 lks. dist.	
	A Fir, 15 ins. diam., bears S.33*E., 33 lks. dist.	
80.00	Marked a Sugar-pine, 20 ins. diam., for cor. of Tps.	+100
	29 and 30 S., Rgs. 8 and 9 W., from which	
	A Sugar-pine, 30 ins. diam., bears N.80*E., 5 lks. dist.	

“The Forks”

Thursday 14th, Rainy weather. With the same men as on the former occasion accompanied me, we left the Camp in canoe ascended the river the length of the forks, left our craft, being provided with Indian guide, shaped our course southerly thro’ a foot path leading along the west shore of the north branch . . .

-- Alexander R. McLeod, December 14, 1826

Immediately, I perceived that we were in the close proximity of about 200 Indians. They raised the war-whoop, and for about 15 minutes contested the ground with us, when the deliberate fire of the men proving too galling, they abandoned their ground and fled in every direction. In the meantime, Lt. Stoneman . . . On hearing our firing, he deployed his men as skirmishers, and came down to our position, killing a number of the Indians as they fled.

Although but five of the enemy were found dead, I have reason to believe that about 15 were killed . . . Although a number of my men were struck by the missiles of the enemy, both balls and arrows, they were all grazing shots which merely tore their clothes. Not one man was wounded.

I have enclosed a rough sketch of the ground in which the engagement took place, which will probably throw light on the subject. During the operation on the river, we took and destroyed 20 large lodges, with quantities of implements invaluable to them. We destroyed about 2000 feet of boards, which had been split out from logs, some of them three feet in width.

We took 15 canoes, and destroyed about thirteen tons of dried Salmon. Both Officers and men have been zealous in the performance of their duties. From Lt. Gibson I have received efficient and zealous aid. I feel much indebted to Lt. Stoneman for his practical knowledge of things, and for his zeal . . .

-- Lt. Col. Silas Casey, "Camp Abbyville," November 24, 1851

. . . [The surviving members of the Coose Bay Commercial Company] look back with pleasure upon the six days travel, at the end of which the junction of the Middle and South branches of the placid waters of the Coquille was reached. There were, as they believed at that time, at least one hundred Indians camped at what is now known as the Hoffman place . . .

No doubt [we] were the first white men that the majority of the Indians had ever seen. This large crowd of red men and women had congregated there for the purpose of hunting and fishing for eels . . .

-- William H. Harris, May, 1853 (Dodge 1898: 127)

Subdivisions of T. 27 S., R. 7 W.

CHAINS		
	An Oak, 36 ins. diam., bears S.41°E., 660 lks. dist.	
65.50	Enter Oak openings, course East and West.	+50
72.75	Dry gulch, course NE.	-20
73.50	Enter prairie, course East and West.	+10
80.00	Set post, cor. Secs. 29, 30, 31 and 32, from which	+20
	An Oak, 16 ins. diam., bears N.89½°W., 445 lks. dist.	
	An Oak, 24 ins. diam., bears S.65°W., 381 lks. dist.	
	An Oak, 24 ins. diam., bears S.25°E., 685 lks. dist.	
	An Oak, 18 ins. diam., bears N.5°E., 436 lks. dist.	
	Land, undulating.	
	Timber, Fir and Oak.	
	Soil, first and second rate.	
	East, on random, between Secs. 29 and 32.	
	Va.20°E.	
40.00	Set temporary ¼ Sec. post.	
79.38	Intersect North and South line, 34 lks. North of cor. N.89°45'W. on true line, between Secs. 29 and 32.	
11.60	Indian burying ground, bears N.26°E.	-80
11.60	Leave Oak timber and enter prairie, course NW. and SW.	
18.87	Indian trail, course North and South.	-20
18.87	Same burying ground, bears N.54°E.	
21.60	Dry bed of creek, 10 lks. wide, course South.	-10
39.69	Set ¼ Sec. post, from which	
	An Oak, 12 ins. diam., bears S.82°E., 1366 lks. dist.	
	An Oak, 24 ins. diam., bears N.88°E., 1714 lks. dist.	
52.25	Dry gulch, 10 lks. wide, course South, the East bank of which is about 10 ft. in perpendicular height.	
	Dennis Hathorn, September 27, 1855	

William P. Wright,
August 6, 1881

Subdivisions of T. 34 S., R. 11 W.

CHAINS

- 40.00 Set temp. $\frac{1}{4}$ sec. cor.
- 79.80 Intersect W. bdy. of Tp., 50 lks. S. of cor. to secs. 12,
13, 7 and 18, from which I run
S.89°39'E., on true line bet. secs. 7 and 18.
Var. 20°E.
- Desc. mountain.
- 20.00 Cross creek, 10 lks., flows SE.; asc.
- 39.80 Mkd. oak, 5 ins. diam., for $\frac{1}{2}$ sec. cor.; from which
Oak, 10 ins. diam., bears S.85°W., 30.
Pine, 4 ins. diam., bears N.84°E., 15.
- 50.00 Top of hill; here it is that the Indians surrounded
Captain Smith and his company during the Rogue River
War.
- 65.00 Cross fence of John Billings; enter corn field.
- 76.00 Leave field; enter willow thicket.
- 79.80 The cor. to secs. 7, 16, 17 and 8.
Good soil; no timber; good grass.
-
- North, bet. secs. 7 and 8.
Var. 20°E.
- 9.50 Enter field.
- 15.00 House of John Billings, S.70°W., about 500 lks.
- 20.00 To fence, runs E. and W.
- 25.00 To branch, 10 lks., flows SE.; asc. ridge, slopes SW.
- 32.00 To slide, offset East 500 lks., North 20.00 chs., then
West 10.00 chs. down mountain, sloping W., thence
North 28.00 chs. to line bet. secs. 6 and 7, 5.00 chs.
W. of place to cor. to secs. 5, 6, 7 and 8, which is
impracticable to establish being on steep mountain
side, sloping W.
- I mkd. alder, 10 ins. diam. for witness cor. to secs.
6 and 7; from which
Alder, 10 ins. diam., bears N.5°E., 15 lks.
Alder, 12 ins. diam., bears S.15°E., 20 lks.

ROUTE

for a Milit. Road

from FORT ORFORD O. T. to the OREGON TRAIL

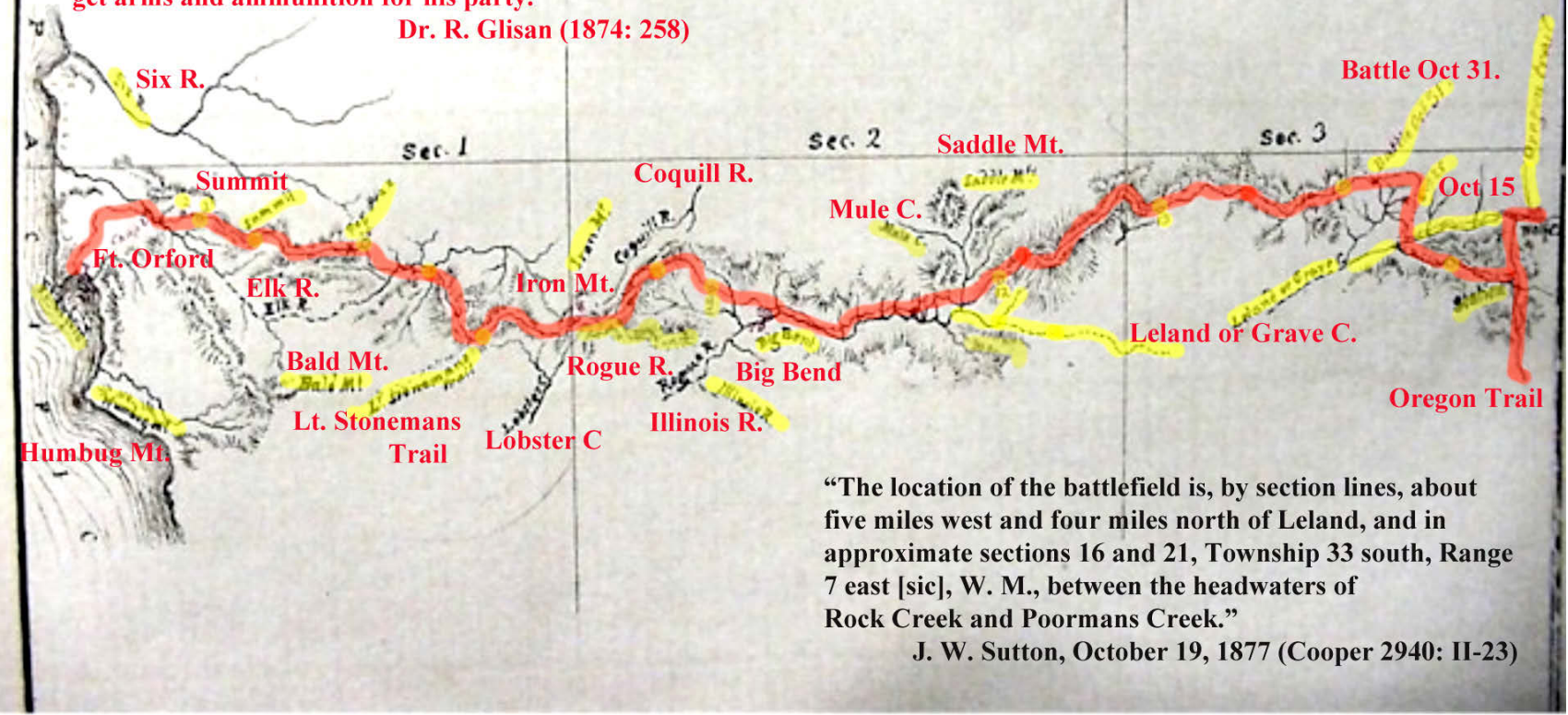
Reconnaissance by Lieut. KAUTZ, U. S. A.

Scale, ten miles to one inch

Oct. 1855.

“Tuesday, October 16th, 1855 -- Lieutenant August V. Kautz, Fourth Infantry, who left here with ten men about eight days ago, to survey a road between this place and Fort Lane, returned last night about twelve o'clock to get arms and ammunition for his party.”

Dr. R. Glisan (1874: 258)



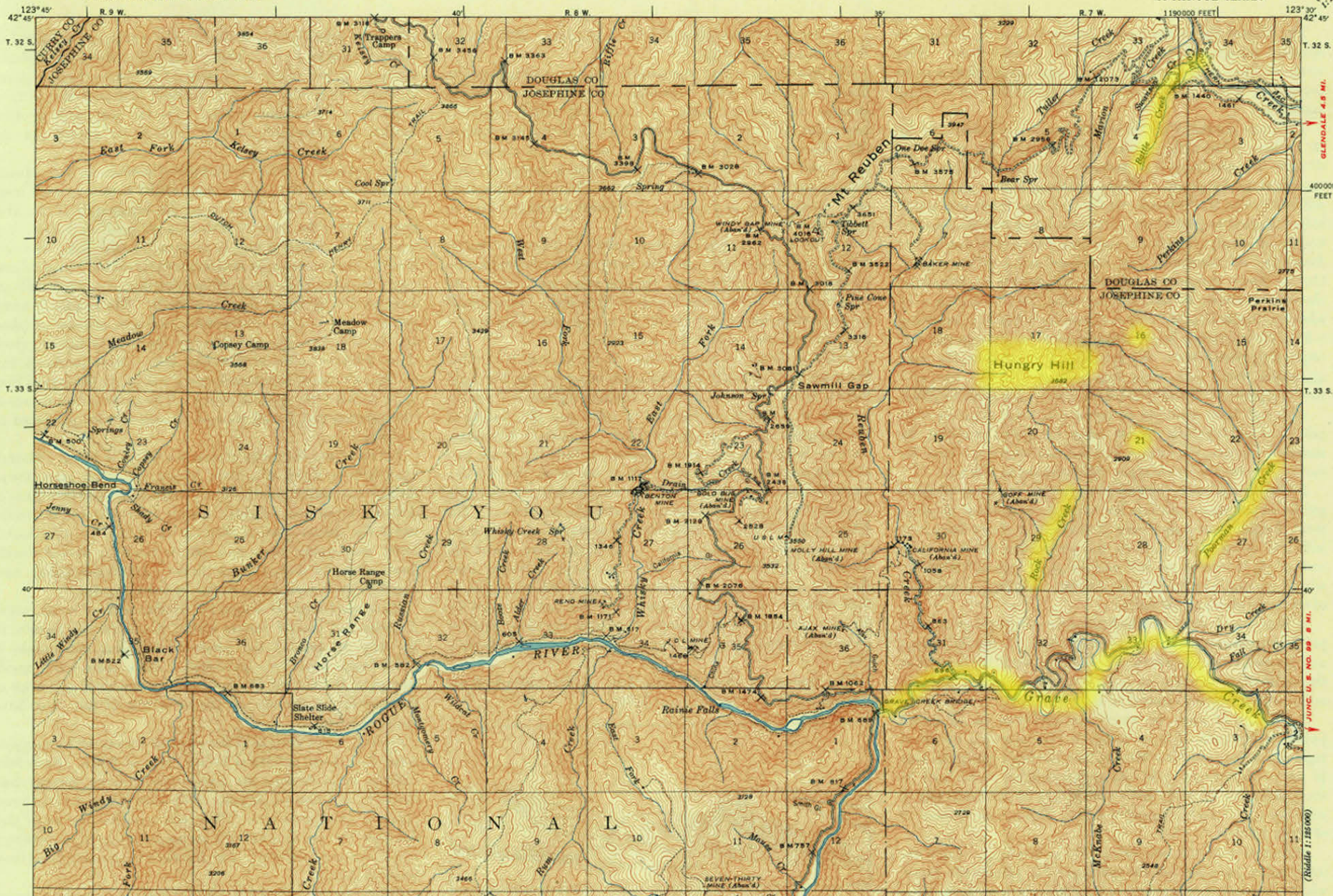
“The location of the battlefield is, by section lines, about five miles west and four miles north of Leland, and in approximate sections 16 and 21, Township 33 south, Range 7 east [sic], W. M., between the headwaters of Rock Creek and Poormans Creek.”

J. W. Sutton, October 19, 1877 (Cooper 2940: II-23)

This map shows the camps the party made each day and they are numbered. It also shows where they had a battle with Indians on Oct 31st.

UNITED STATES
DEPARTMENT OF THE INTERIOR
GEOLOGICAL SURVEY

OREGON
GALICE QUADRANGLE
15-MINUTE SERIES



(Rolls)
1:125,000

4.8 MI.
GLENDALE

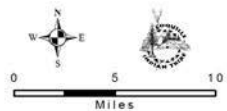
9 MI.
JUNIC. U. S. NO. 89

(Rolls)
1:125,000



Map produced by Coquille Indian Tribe's GIS Program, January, 2012
 Projection: Oregon State Plane South NAD83 HARN
 Data: Coquille Indian Tribe, BLM, ORGeo

This product is for informational purposes and may not have been prepared for, or be suitable for legal, engineering, or surveying purposes. Users of this information should review or consult the primary data and information sources to ascertain the usability of the information.



- Legend**
- Photo Location
 - Trail Network
 - Study Area Districts
 - District 1
 - District 2
 - District 3
 - District 4
 - District 5
 - District 6
 - District 7
 - City Limits

“Clear Skies & Clearcuts”



Tidewaters



Tidal Canoe Routes



Beach Trails

“This is also drifting sand, and the track of travelers is obliterated as soon as made.”

Dr. John Evans, July 1, 1856



The Dunes



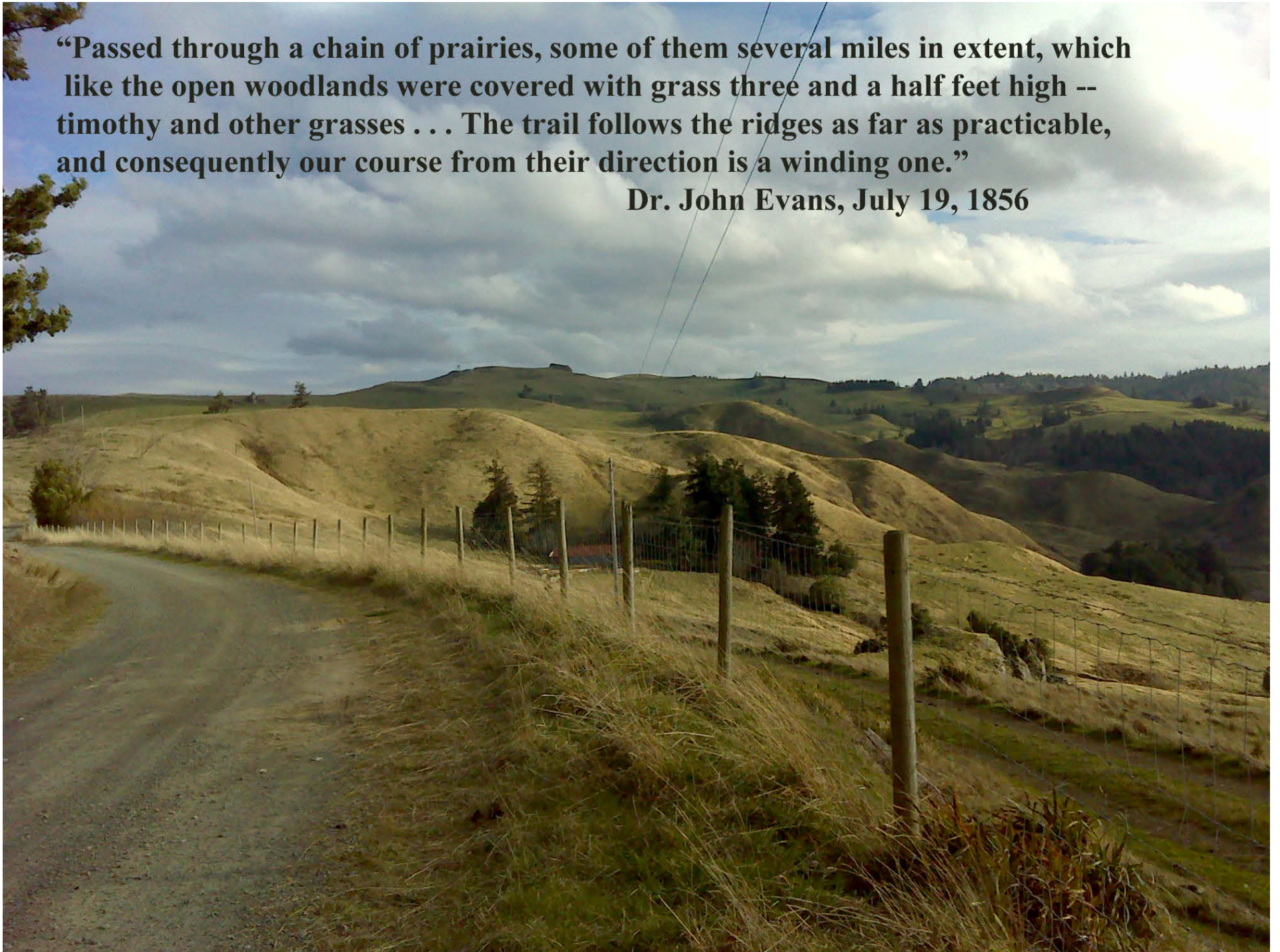
Forested Canyons





“Passed through a chain of prairies, some of them several miles in extent, which like the open woodlands were covered with grass three and a half feet high -- timothy and other grasses . . . The trail follows the ridges as far as practicable, and consequently our course from their direction is a winding one.”

Dr. John Evans, July 19, 1856

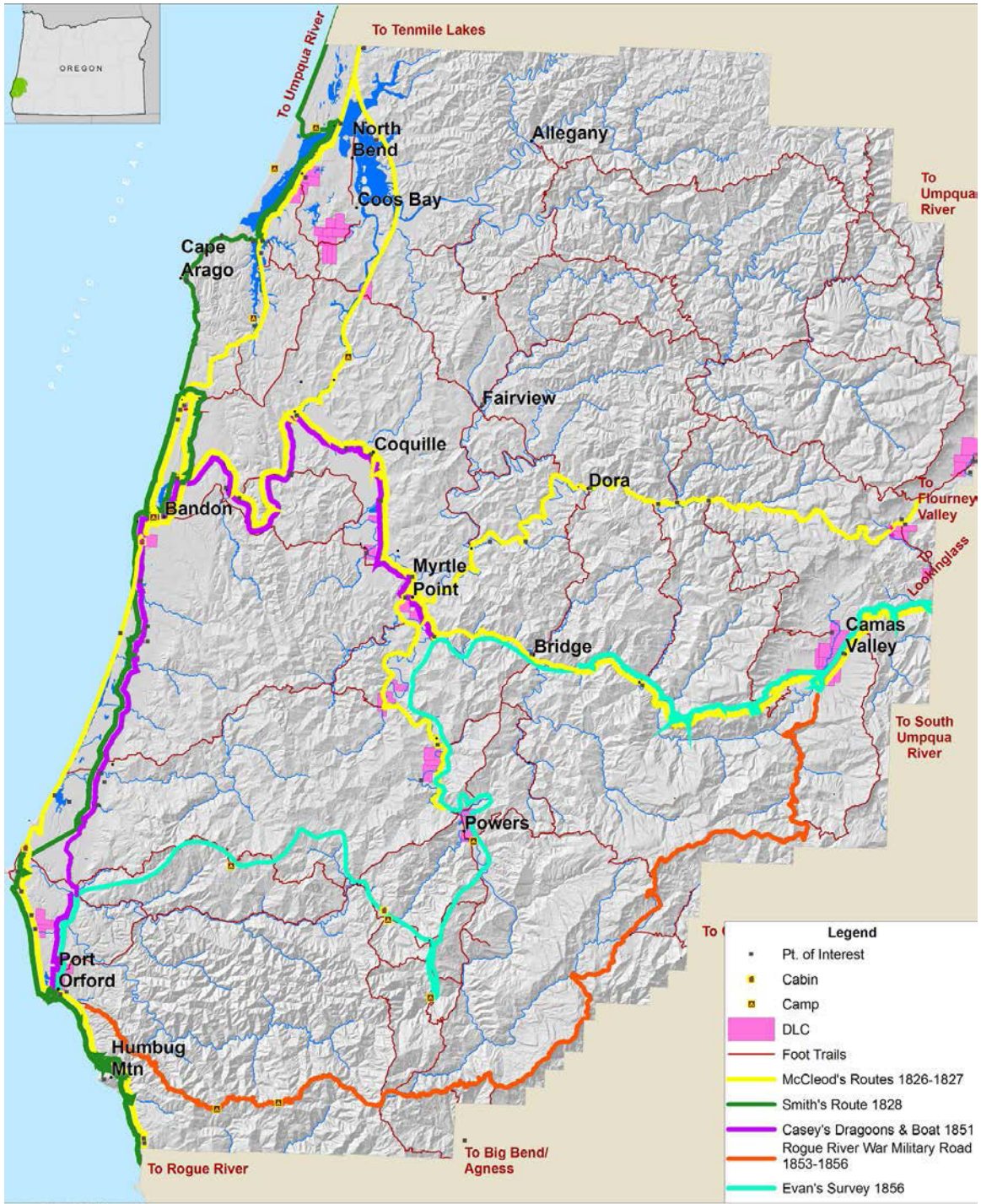


Landmarks



“The Forks”





- Legend**
- Pt. of Interest
 - Cabin
 - Camp
 - DLC
 - Foot Trails
 - McCleod's Routes 1826-1827
 - Smith's Route 1828
 - Casey's Dragoons & Boat 1851
 - Rogue River War Military Road 1853-1856
 - Evan's Survey 1856

Oregon Websites and Watersheds Project, Inc.



www.ORWW.org