

## References

- Anderson, M. Kat 1993. The Experimental Approach to Assessment of the Ecological Effects of Horticultural Practices By Indigenous Peoples on California Wildlands. PhD Dissertation, University of California, Berkeley, California: 211 pp.
- Anderson, M. Kat 2005. Tending the Wild: Native American Knowledge and the Management of California's Natural Resources. University of California Press, Berkeley, California: 526 pp.
- Anonymous 2007. "Rockslide Closes Canyon Creek Road South of Cascadia," The New Era, Sweet Home, Oregon, September 19: 6.
- Barr, W. D. 1879. South Bdy. of T. 13 S., R. 3 E., Contract No. 294 dated Aug. 20, 1878. Typewritten copy in possession of Cascade Timber Consulting, Inc., Sweet Home, Oregon: 2 pp. excerpted from March 7-8, 1879 field notes.
- Berreman, Joel V. 1937. Tribal Distribution in Oregon. Memoirs of the American Anthropological Association, No. 47, American Anthropological Association, Menasha, Wisconsin: 67 pp.
- Boyd, Robert 1999a. The Coming of the Spirit of Pestilence. University of Washington Press, Seattle Washington: 403 pp.
- Boyd, Robert 1999b. Indians, Fire, and the Land in the Pacific Northwest. Oregon State University Press, Corvallis, Oregon: 313 pp.
- Braman, Tom 1987. "Indian Trail to Coast Teaches History, Ecology," Benton Bulletin. Philomath, Oregon. January 10: 1, 5.
- Carey, Charles H. 1971. General History of Oregon. Binford & Mort, Publishers, Portland, Oregon: 916 pp.
- Carey, Margaret S. and Patricia H. Hainline 1979. Sweet Home in the Oregon Cascades. Calapooia Publications, Brownsville, Oregon: 128 pp.
- Carlson, Ken 2005. The Ecological Legacy of Indian Burning Practices in Southwestern Oregon. Phd. dissertation, Oregon State University, Corvallis, Oregon.
- Dickson, Evelyn M. H. 1946. Food Plants of Western Oregon Indians. MA Thesis, Stanford University, Palo Alto, California: 218 pp.
- ORWW/CTGR 2008 Owl Ridge Trails Report*

Frair, Jacqueline L., Evelyn H. Merrill, Darcy R. Visscher, Daniel Fortin, Hawthorne L. Beyer and Juan M. Morales. 2005. "Scales of movement by elk (*Cervus elaphus*) in response to heterogeneity in forage resources and predation risk," Landscape Ecology. Vol. 20: 273-287

Kay, Charles E. 2007. "Were Native People Keystone Predators? A Continuous-Time Analysis of Wildlife Observations Made by Lewis and Clark in 1804-1806," The Canadian Field Naturalist. Vol. 121, No. 1: 1-12.

Kie, John G., Alan A. Ager, and R. Terry Bowyer. 2005. "Landscape-level movements of North American elk (*Cervus elaphus*): effects of habitat patch structure and topography," Landscape Ecology. Vol. 20: 289-300.

Gibbs, George and Edward A. Starling 1851. Sketch of the Willamette Valley. Several copies of various scales located in the Oregon State University Valley Library Map Room, Corvallis, OR: 1 sheet.

Hammond, Albert E. 1895. Plat of Township No. 14 South, Range No. 5 East of the Willamette Meridian, Oregon. General Land Office, John B. Arnold, Surveyor General for Oregon, Portland, Oregon. Approved June 29, 1896: 1 sheet.

Haskin, Leslie L. 1934. Wild Flowers of the Pacific Coast. Binford & Mort, Publishers (appears to be a post-1949 facsimile reproduction of original Metropolitan Press edition), Portland, Oregon: 409 pp.

Mackey, Harold 1972. "New Light on the Molalla Indians," Oregon Historical Quarterly, Vol. LXXIII: 63-65.

McArthur, Lewis L. 1982. Oregon Geographic Names, 5th Edition. Western Imprints, Oregon Historical Society, Portland, Oregon: 839 pp.

McClary, Toby 2007. "Cascadia Cave Holds Significant Native American History," Smoke Signals, A Publication of the Grand Ronde Tribe, Grand Ronde, Oregon, May 1: 1, 6-7.

McIntosh, Bruce A., Sharon E. Clarke, and James R. Sedell 1990. Summary Report for Bureau of Fisheries Stream Habitat Surveys: Willamette River Basin 1934-1942. Pacific Northwest Research Station, USDA Forest Service, Corvallis, Oregon: 472 pp.

Metsker, Charles F. 1938. Metsker's Atlas of Linn County Oregon: Dated Aug. 1938. Metsker Map Company, Tacoma, Washington: 69 plates & index.

*ORWW/CTGR 2008 Owl Ridge Trails Report*

Minore, Don 1972. The Huckleberries of Oregon and Washington – A Dwindling Resource. USDA Forest Service Research Paper. PNW-143.

Minore, Don, Alan W. Smart, and Michael E. Dubrasich 1979. Huckleberry Ecology and Management Research in the Pacific Northwest. USDA Forest Service Research General Technical Report. PNW-93.

Minto, John 1903. “Minto Pass: It’s History and Indian Tradition,” Oregon Historical Quarterly, Vol. IV: 241-250.

Minto, John 1908. “From Youth to Age as An American,” Oregon Historical Quarterly, Vol. IX: 127-172.

Morgan, Sean C. 2007. “Hike a Walk in the Past,” The New Era, Sweet Home, Oregon, October 3: 1, 12.

Olsen, Charles O., with Leslie L. Haskin and Verne Bright 1982 (reprint). History of Linn County, Oregon. Workers of the Writers’ Program of the Works Project Administration in the State of Oregon, sponsored by the Linn County Pioneer Memorial Association, reprinted by L. M. Wheeler: 128 pp.

Paul, Alex 2006. “Clearing the Way for Others,” Albany Democrat Herald, Albany, Oregon. August 3: A1.

Pershin, George S. 1895. East Bdy. of T. 14 S., R. 3 E., Contract No. 640 dated July 25, 1895.” Typewritten copy in possession of Cascade Timber Consulting, Inc., Sweet Home, Oregon: 49 total pp. excerpted from September 12-29, 1895 field notes; missing pp. numbered 21-26.

Plummer, Fred G. 1901. The Cascade Range Forest Reserve, Oregon: Showing Land Classification. US Geological Survey, US Government Printing Office, Washington, DC: 1 sheet.

Plummer, Fred G. 1903. “Central Portion of Cascade Range Forest Reserve,” IN: Forest Conditions in the Cascade Range Forest Reserve, Oregon, with an Introduction by Henry Gannett. Government Printing Office, Washington, DC: 71-146.

Richards, Rebecca T. and Susan J. Alexander 2006. A Social History of Wild Huckleberry Harvesting in the Pacific Northwest. General Technical Report PNW-GTR-657, USDA Forest Service, Pacific Northwest Research Station, Portland, Oregon: 113 pp.

*ORWW/CTGR 2008 Owl Ridge Trails Report*

Ruby, Robert H. and John A. Brown 1986. A Guide to the Indian Tribes of the Pacific Northwest. University of Oklahoma Press, Norman, Oklahoma: 289 pp.

Stewart, Omer C. 2002. Forgotten Fires: Native Americans and the Transient Wilderness. University of Oklahoma Press, Norman, Oklahoma: 364 pp.

Swanson, Scott 2007. "Life Ends, Begins for Salmon," The New Era, Sweet home, Oregon, September 19: 1, 7.

Warner, James A. 1870. 3<sup>rd</sup> Standard Parallel South, Tps. 13 and 14 S., Contract No. 35 dated August 15, 1870. Typewritten copy in possession of Cascade Timber Consulting, Inc, Sweet Home, OR: 1 pg. undated excerpt.

Williamson, Nina L. and Richard R. Milligan 1984. Pioneer Stories of Linn County, Oregon, Volume 1. Linn Genealogical Society, Albany, Oregon: 136 pp.

Winkler, Carol J. 1984. A Site Location Analysis for the Middle Fork of the Willamette River. Report to USDA Forest Service, Willamette National Forest, in partial fulfillment of Master of Arts degree, University of Oregon, Eugene, Oregon: 57 pp. w/appendices.

Zenk, Henry B. and Bruce Rigsby 1998. "Molala." IN: Handbook of North American Indians, Volume 12 Plateau, Deward E. Walker, Jr., Volume Editor. Smithsonian Institution, Washington, DC: 439-445.

Zybach, Bob, Mack Barrington and Thomas Downey 1995. "Converting Historical Information to GIS: Political Boundaries of the Douglas-Fir Region, 1788 to 1995," Journal of Forestry. Vol. 93, No. 5: 15-20.

Zybach, Bob 2002. "The Alesya Valley Prairie Complex, ca. 1850: Native Landscapes in Western GLO Surveys," IN: Changing Landscapes: "Sustaining Traditions," Proceedings of the 5th and 6th Annual Coquille Cultural Preservation Conferences, Coquille Indian Tribe, North Bend, Oregon: 161-188.

Zybach, Bob 2003. The Great Fires: Indian Burning and Catastrophic Forest Fire Patterns of the Oregon Coast Range, 1491-1951. PhD Dissertation, Oregon State University, Corvallis, Oregon: 458 pp.

Zybach, Bob 2008. Gordon Meadows Restoration Plan. Unpublished report prepared for the Confederated Tribes of Grand Ronde. Oregon Websites and Watersheds Project, Inc.: 15 pp.

## Appendix A. Names on the Land and Water

This appendix is primarily comprised of a map and two tables: a) a table of named sources, courses, and bodies of water; and b) a table of named landmarks and locations. These are names given to features within the study area that, for the most part, are officially recognized by the USGS and routinely appear on local maps and guides. Most of these names seem to have been assigned between the time of initial federal USDI and USFS ownership and management, in the late 1890s and early 1900s, and World War II. Few names survive from a time earlier than this 1893-1941 period, and none date to the 1750-1850 time of Santiam Molalla ownership, or to any time earlier than that.

The names people give the features on the landscape are important to a better understanding of both the land and the people who live there. No Santiam Molalla names have been recorded in the study area. The Molalla name for People (“Latiwi”) has recently been substituted for the offensive name of “Squaw” for a significant mountain and a primary South Santiam headwater tributary in the study area, but “Indian Prairie” has now been called “Tombstone Prairie” for more than 100 years, and no other references to Indian or Molallan culture -- with the exception of some recently renamed USFS commercial campgrounds along the South Santiam River -- appear on the landscape today.

Table A1 (pg. 62). Each of these names is referenced geographically by the drainage or subbasin in which it is tributary or located, by legal description (Metsker 1938), and by historical written or mapped sources. Most of these names are shown on the index map, which is currently in the process of being updated.

Table A2 (pg. 65). Each of these names is referenced by the subbasin in which it is located, by legal description (Metsker 1938), and by historical written or mapped sources. Some names, such as “Elephant Mountain,” have apparently been forgotten and are no longer used; other names, appearing with an asterisk (\*), were informally assigned for purposes of convenience during the course of this project and are included for general reference purposes. Most of these names are also shown on the index map, which is currently in the process of being updated.

Map 6. Index of Landmark Names in Owl Ridge Trails Project area.

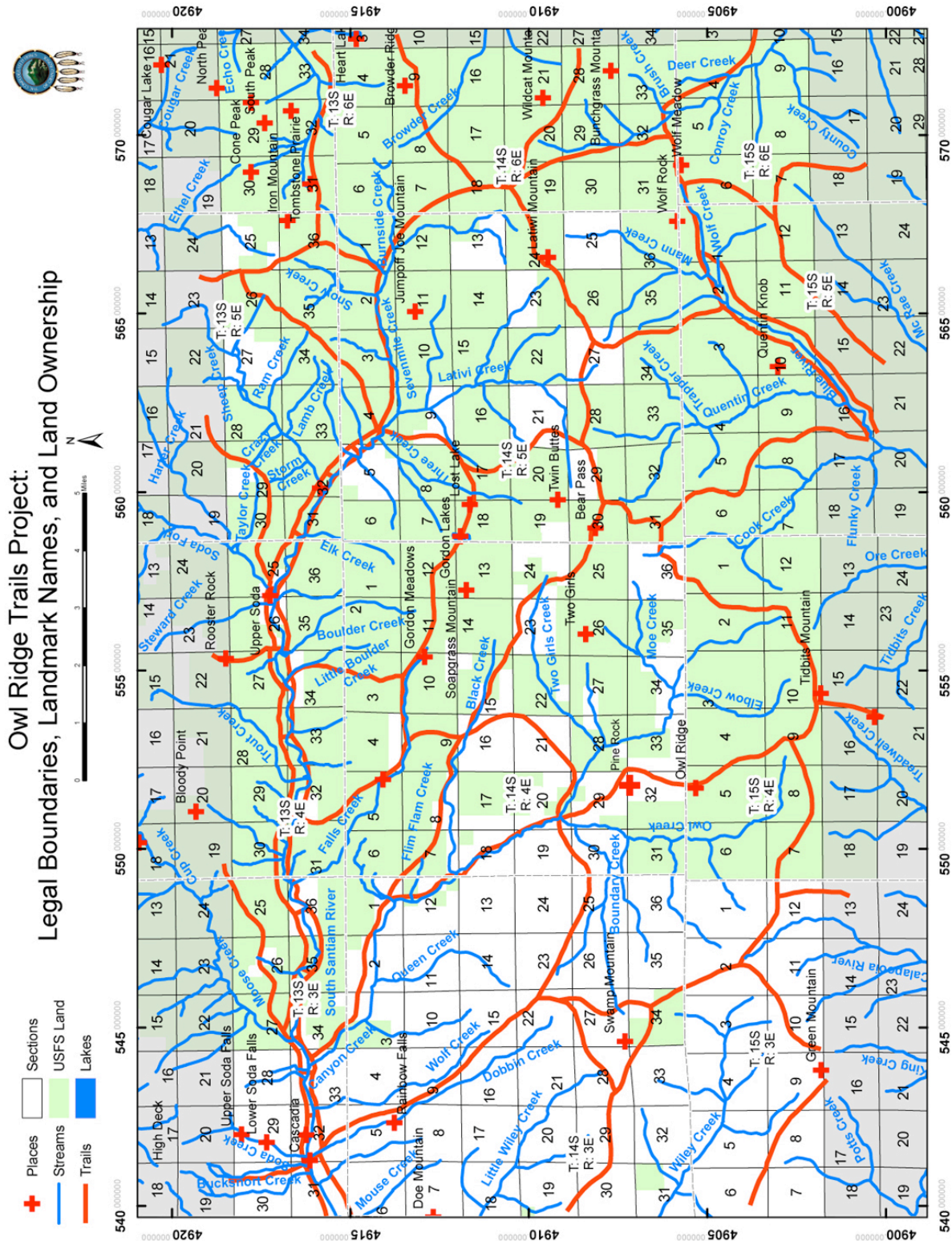


Table A1. Named sources, courses, and bodies of water.

<b>Current Name</b>	<b>Tributary To</b>	<b>Tsp.</b>	<b>Rng.</b>	<b>Sec.</b>	<b>References</b>
Beaver Lakes	Middle Santiam River	13 S.	5 E.	1	USGS 1946
Black Creek	Canyon Creek	14 S.	3 E.	12	Metsker 1938
Blue River	McKenzie River	15 S.	5 E.	10	GLO 1896
Boulder Creek	South Santiam River	13 S.	4 E.	27	GLO 1883
Boundary Creek	Owl Creek	14 S.	4 E.	29	Metsker 1938
Browder Creek	Smith River	14 S.	6 E.	16	Metsker 1938
Brush Creek	Deer Creek	14 S.	6 E.	32	Metsker 1938
Bucksnot Creek	South Santiam River	13 S.	3 E.	31	Metsker 1938
Burnside Creek	Sevenmile Creek	14 S.	5 E.	1	USDA 1997
Cabin Creek	South Santiam River	13 S.	3 E.	31	Metsker 1938
Cadenza Creek	Deer Creek	14 S.	6 E.	29	Metsker 1938
Canyon Creek	South Santiam River	13 S.	3 E.	33	GLO 1879
Carpenter Creek	Deer Creek	15 S.	6 E.	9	Metsker 1938
Coley Creek	Owl Creek	14 S.	4 E.	31	Metsker 1938
Conroy Creek	Deer Creek	15 S.	6 E.	4	Metsker 1938
Cook Creek	Blue River	15 S.	5 E.	8	Metsker 1938
Cougar Creek	Middle Santiam River	13 S.	6 E.	29	Metsker 1938
County Creek	Deer Creek	15 S.	6 E.	9	Metsker 1938
Crazy Creek	Sheep Creek	13 S.	5 E.	33	Metsker 1938
Cul de Sac Creek	Owl Creek	15 S.	4 E.	6	Metsker 1938
Deer Creek	Smith River	15 S.	6 E.	9	Metsker 1938
Dobbin Creek	South Santiam River	13 S.	3 E.	32	GLO 1879
Echo Creek	Hackleman Creek	13 S.	6 E.	28	Metsker 1938
Elbow Creek	Canyon Creek	14 S.	4 E.	34	Metsker 1938
Elk Creek	South Santiam River	13 S.	5 E.	31	GLO 1896
Ethel Creek	Middle Santiam River	13 S.	6 E.	30	Metsker 1938
Falls Creek	South Santiam River	13 S.	3 E.	26	GLO 1896
Flimflam Creek	Canyon Creek	14 S.	3 E.	12	Metsker 1938

<b>Gordon Lakes</b>	Three Creek	14 S.	5 E.	18	Metsker 1938
<b>Hackleman Creek</b>	Clear Lake	13 S.	6 E.	33	Metsker 1938
<b>Harter Creek</b>	Soda Fork	13 S.	4 E.	24	Metsker 1938
<b>Heart Lake</b>	Hackleman Creek	14 S.	6 E.	3	Metsker 1938
<b>Indian Creek</b>	Hackleman Creek	13 S.	6 E.	33	Metsker 1938
<b>Keith Creek</b>	South Santiam River	13 S.	4 E.	26	Metsker 1938
<b>Lamb Creek</b>	Sheep Creek	13 S.	5 E.	28	Metsker 1938
<b>Latiwi Creek</b>	South Santiam River	14 S.	5 E.	9	USDA 2002
<b>Little Boulder Creek</b>	South Santiam River	13 S.	4 E.	27	Metsker 1938
<b>Little Wiley Creek</b>	Wiley Creek	14 S.	3 E.	18	Metsker 1938
<b>Loon Creek</b>	Owl Creek	14 S.	4 E.	31	Metsker 1938
<b>Lost Lake</b>	Three Creek	14 S.	5 E.	18	Metsker 1938
<b>Lower Soda Falls</b>	Soda Creek	13 S.	3 E.	29	
<b>Mann Creek</b>	Blue River	15 S.	5 E.	2	Metsker 1938
<b>McRae Creek</b>	Lookout Creek	15 S.	5 E.	12	Metsker 1938
<b>Middle Santiam River</b>	Santiam River	13 S.	5 E.	25	
<b>Moe Creek</b>	Canyon Creek	14 S.	4 E.	34	Metsker 1938
<b>Moose Creek</b>	South Santiam River	13 S.	3 E.	34	GLO 1879
<b>Moose Creek Falls</b>	Moose Creek	13 S.	3 E.	27	USGS 2007
<b>Moose Lake</b>	Moose Creek	13 S.	4 E.	18	Metsker 1938
<b>Mouse Creek</b>	South Santiam River	14 S.	3 E.	6	Metsker 1938
<b>North Fork Calapooia River</b>	Calapooia River	15 S.	3 E.	12	GLO 1901
<b>Ore Creek</b>	Blue River	15 S.	4 E.	11	Metsker 1938
<b>Owl Creek</b>	Canyon Creek	14 S.	4 E.	20	Metsker 1938
<b>Potts Creek</b>	Calapooia River	15 S.	3 E.	7	Metsker 1938
<b>Queen Creek</b>	Canyon Creek	14 S.	3 E.	2	Metsker 1938
<b>Quentin Creek</b>	Blue River	15 S.	5 E.	9	Metsker 1938
<b>Rainbow Falls</b>	Dobbin Creek	14 S.	3 E.	5	USGS 1946
<b>Ram Creek</b>	Sheep Creek	13 S.	5 E.	28	USDA 1997
<b>Sevenmile Creek</b>	South Santiam River	14 S.	5 E.	9	Metsker 1938
<b>Sheep Creek</b>	South Santiam River	13 S.	5 E.	32	Metsker 1938



<b>Slide Creek</b>	South Santiam River	13 S.	6 E.	33	Metsker 1938
<b>Slipout Creek</b>	Blue River	15 S.	5 E.	4	Metsker 1938
<b>Smith River</b>	McKenzie River				Metsker 1938
<b>Snow Creek</b>	Sevenmile Creek	14 S.	5 E.	2	GLO 1896
<b>Soda Creek</b>	South Santiam River	13 S.	3 E.	32	Metsker 1938
<b>Soda Fork</b>	South Santiam River	13 S.	4 E.	25	GLO 1883
<b>Soda Spring</b>	Soda Creek	13 S.	3 E.	31	Metsker 1938
<b>South Santiam River</b>	Santiam River	13 S.	3 E.	31	Gibbs-Starling 1851
<b>Stewart Creek</b>	South Santiam River	13 S.	4 E.	26	Metsker 1938
<b>Storm Creek</b>	Sheep Creek	13 S.	5 E.	32	Metsker 1938
<b>Taylor Creek</b>	Soda Fork	13 S.	4 E.	25	Metsker 1938
<b>Three Creek</b>	South Santiam River	14 S.	5 E.	4	GLO 1896
<b>Tidbits Creek</b>	Ore Creek	15 S.	4 E.	10	Metsker 1938
<b>Toll Creek</b>	South Santiam River	14 S.	5 E.	5	Metsker 1938
<b>Trapper Creek</b>	Blue River	15 S.	5 E.	4	Metsker 1938
<b>Trout Creek</b>	South Santiam River	13 S.	4 E.	32	GLO 1883
<b>Two Girls Creek</b>	Canyon Creek	14 S.	4 E.	28	Metsker 1938
<b>Upper Soda Falls</b>	Soda Creek	13 S.	3 E.	29	Metsker 1938
<b>Whiterock Creek</b>	Moose Creek	13 S.	3 E.	27	Metsker 1938
<b>Wiley Creek</b>	South Santiam River	14 S.	3 E.	31	Metsker 1938
<b>Wolf Creek (1)</b>	South Santiam River	13 S.	3 E.	32	Metsker 1938
<b>Wolf Creek (2)</b>	Blue River	15 S.	5 E.	2	Metsker 1938

Table 2A. Named landmarks and locations.

Current Name	Subbasin	Tsp.	Rng.	Sec.	References
Bear Pass	Quentin Creek	14 S.	5 E.	30	Metsker 1938
Beargrass Meadow*	Black Creek	14 S.	4 E.	15	*ORWW 2007
Bloody Point	Trout Creek	13 S.	4 E.	20	Metsker 1938
Browder Ridge	Browder Creek	14 S.	6 E.	9	Metsker 1938
Bunchgrass Mountain	Deer Creek	14 S.	6 E.	28	Metsker 1938
Carpenter Mountain	Wolf Creek	15 S.	6 E.	7	Osborne 1933
Cascadia	Bucksnot Creek	13 S.	3 E.	31	Metsker 1938
Cascadia Caves	Soda Creek	13 S.	3 E.	32	USGS 1946
Cone Peak	Hackleman Creek	13 S.	6 E.	29	Plummer 1901
Crossroads Camp*	North Fork Calapooia River	15 S.	3 E.	2	*ORWW 2007
Doe Mountain	Mouse Creek	14 S.	3 E.	7	Metsker 1938
Echo Mountain	Hackleman Creek	13 S.	6 E.	28	Metsker 1938
Elephant Mountain	Canyon Creek	14 S.	3 E.	1	GLO 1879
Fernview	Boulder Creek	13 S.	4 E.	27	USGS 1986
Fishing Rock*	Falls Creek	13 S.	3 E.	32	*ORWW 2007
Gordon Meadows	Falls Creek	14 S.	4 E.	11	Metsker 1938
Green Mountain	Wiley Creek	15 S.	3 E.	9	Metsker 1938
Green Mountain Ridge	Wiley Creek	15 S.	3 E.	6	Metsker 1938
Happy Camp	Wiley Creek	15 S.	3 E.	6	Metsker 1938
Harter Mountain	Harter Creek	13 S.	5 E.	10	Metsker 1938
High Deck	Whiterock Creek	13 S.	3 E.	16	Metsker 1938
House Rock	Sheep Creek	13 S.	5 E.	32	USGS 1946
Iron Mountain	Sevenmile Creek	13 S.	5 E.	36	GLO 1896; Osborne 1933
Jumpoff Joe Mountain	Sevenmile Creek	14 S.	5 E.	11	Osborne 1937
Latiwi Mountain	Latiwi Creek	14 S.	5 E.	24	USDA 2002
Long Ranch	Trout Creek	13 S.	4 E.	32	Metsker 1938
Longbow Camp	Falls Creek	13 S.	4 E.	31	Metsker 1938
Lost Prairie	Hackleman Creek	13 S.	6 E.	27	GLO 1896
Moose Mountain	Moose Creek	13 S.	4 E.	11	Metsker 1938

<b>North Peak</b>	Echo Creek	13 S.	6 E.	28	Metsker 1938
<b>Owl Ridge</b>	Owl Creek	14 S.	4 E.	32	Metsker 1938
<b>Pine Rock</b>	Owl Creek	14 S.	4 E.	29	Metsker 1938
<b>Quentin Knob</b>	Quentin Creek	15 S.	5 E.	10	Metsker 1938
<b>Rooster Rock</b>	Keith Creek	13 S.	4 E.	22	Osborne 1937
<b>Soapgrass Mountain</b>	Black Creek	14 S.	4 E.	13	Metsker 1938
<b>South Peak</b>	Hackleman Creek	13 S.	6 E.	29	Metsker 1938
<b>Swamp Mountain</b>	Dobbin Creek	14 S.	3 E.	34	Metsker 1938
<b>Tidbits Mountain</b>	Elbow Creek	15 S.	4 E.	10	Osborne 1934
<b>Tombstone Pass</b>	Hackleman Creek	13 S.	6 E.	31	Metsker 1938
<b>Tombstone Prairie</b>	Hackleman Creek	13 S.	6 E.	31	Plummer 1901
<b>Twin Buttes</b>	Two Girls Creek	14 S.	5 E.	19	Osborne 1933
<b>Two Girls</b>	Two Girls Creek	14 S.	4 E.	26	Metsker 1938
<b>Upper Soda</b>	Soda Fork				Metsker 1938
<b>Wildcat Mountain</b>	Browder Creek	14 S.	6 E.	21	Osborne 1934
<b>Wolf Meadow</b>	Wolf Creek	15 S.	6 E.	6	Metsker 1938
<b>Wolf Rock</b>	Mann Creek	14 S.	5 E.	36	Metsker 1938

## Appendix B. Santiam Molalla Destinations and Foot-Trail Routes

This appendix lists the 32 individual Santiam Molalla foot-trail segments described in Part 4 of this report, and assigns a discrete inventory name and number for each segment.

Map 5 shows the final GIS draft location for each trail segment, and labels each according to the following table. Beginning points and destinations are generally assigned according to access limitations imposed by snow (Part 4), or by where seasonal population centers are assumed to be located (Part 3).

The “Types” of foot-trails listed are divided into four categories:

- 1) **Cross Country** trails follow more than one type of terrain to reach their destination. For example, a trail might leave a location along a river, follow a series of benches along a hillside, and turn uphill along a creek to a saddle, before connecting to a ridgeline campground. Another example might be a straight-line shortcut between two locations; but that would not typically be considered a “primary” trail so much as a “secondary” or “situational” route.
- 2) **Ridgeline** trails follow major ridgelines wherever possible. They are the highest elevation trails and have the shortest, and perhaps busiest, seasonal use periods as a result. They also seem to be the most stable of the trail types, and likely the most ancient and clearly-defined trails.
- 3) **Riparian** trails closely follow waterways and shores, such as along creeks or the shores of lakes and ponds. They are dynamic in that they usually vary from time to time due to seasonal and sometimes permanent changes in shoreline and streambank locations.
- 4) **Riverine** trails are the most dynamic and usually the most heavily used trails, because people tend to reside most heavily along riverbanks and near the mouths of streams. These trails usually follow both sides of a river, at least during seasonal flooding periods, and directly connect population centers and key fishing and trading locations. These trails are subject to floods, landslides, and major creek crossings, among other things, and may vary significantly in location between late summer and mid-winter.

Table B1. Santiam Molalla Trails Network: Primary travel, trade, and resource use foot-trail segments, 1750-1850.

<b>Trail Name</b>	<b>No.</b>	<b>From</b>	<b>To</b>	<b>Type</b>
<b>Bear Pass</b>	01	Quentin Creek Mouth	Bear Pass	Ridgeline
<b>Black Creek</b>	02	Black Creek Mouth	Bear Pass	Cross Country
<b>Blue River</b>	03	Blue River Mouth	Wolf Rock	Riverine
<b>Boundary Creek</b>	04	Owl Creek Mouth	Swamp Mountain	Riparian
<b>Browder Ridge</b>	05	Latiwi Mountain Divide	Browder Ridge	Ridgeline
<b>Bunchgrass Mountain</b>	06	Latiwi Mountain Divide	Bunchgrass Mountain	Ridgeline
<b>Canyon Creek</b>	07	Canyon Creek Mouth	Owl Creek Mouth	Riparian
<b>Carpenter Mountain</b>	08	Blue River Mouth	Carpenter Mountain	Ridgeline
<b>Cascadia North</b>	09	Soda Spring	Moose Ridge	Ridgeline
<b>Deer Creek</b>	10	Deer Creek Mouth	Latiwi Mountain Divide	Riparian
<b>Falls Creek</b>	11	Long Ranch	Gordon Meadows	Cross Country
<b>Gordon Lakes</b>	12	Little Boulder Creek Mouth	Twin Buttes Trail	Ridgeline
<b>Green Mountain</b>	13	Happy Camp	“Crossroads Camp”	Ridgeline
<b>Harter Mountain East</b>	14	Burnside Creek Mouth	Harter Mountain	Ridgeline
<b>Harter Mountain West</b>	15	Latiwi Creek Mouth	Harter Mountain	Ridgeline

<b>Indian Prairie</b>	16	Tombstone Pass	Fish Lake	Cross Country
<b>Latiwi Mountain</b>	17	Bear Pass	Latiwi Mountain Divide	Ridgeline
<b>Mann Creek</b>	18	Mann Creek Mouth	Latiwi Mountain Trail	Ridgeline
<b>Moose Mountain</b>	19	Moose Creek Mouth	Moose Mountain	Ridgeline
<b>North Fork Calapooia</b>	20	North Fork Calapooia River Mouth	Tidbits Mountain	Riverine
<b>Owl Ridge</b>	21	Owl Creek Mouth	Tidbits Mountain	Ridgeline
<b>Rooster Rock</b>	22	Boulder Creek Mouth	Moose Mountain	Ridgeline
<b>Sevenmile Creek</b>	23	Latiwi Creek Mouth	Latiwi Mountain Divide	Riparian
<b>Soda Fork</b>	24	Soda Fork Mouth	Harter Mountain	Cross Country
<b>South Santiam North</b>	25	Cascadia	Latiwi Creek Mouth	Riverine
<b>South Santiam South</b>	26	Cascadia	Latiwi Creek Mouth	Riverine
<b>Swamp Mountain</b>	27	Dobbins Creek Mouth	“Crossroads Camp”	Ridgeline
<b>Tidbits Mountain</b>	28	Bear Pass	Tidbits Mountain	Ridgeline
<b>Twin Buttes</b>	29	Latiwi Creek Mouth	Bear Pass	Ridgeline
<b>Two Girls Creek</b>	30	Owl Creek Mouth	Black Creek Trail	Cross Country
<b>Wiley Creek</b>	31	Wiley Creek Mouth	Swamp Mountain	Ridgeline
<b>Wolf Rock</b>	32	Obsidian Cliffs	Wolf Rock	Cross Country

## Appendix C. Local Names of Plants Used by Santiam Molalla

This appendix lists the majority of cultural plants documented by researchers for this study (see Table 2 and Part 5). Academic levels, experience, and interests of the eight surveyors varied considerably, but most had good to excellent basic botanical skills. This list depended on local knowledge of native plants and their names to complete. The final number of named and documented plants is somewhat longer than the list of most common references given in Table C1, and additional plants are listed in the GPS Excel file (see Appendix D).

**Plant Names** are those given by the field survey crews, often following discussion and consultation with one another. These names (along with a few minor notations of other plants in the daily forms or informal notes) are almost precisely the same as those found by Winkler (1984) in her study of the Molalla in the Middle Fork Willamette and McKenzie river basins (see Part 5). Latin names for these plants are given in Table C2, and can also be found in Winkler, who used Hitchcock as a principal reference.

**Lowest and Highest Elevations** for each species represents the documented observations of the field researchers, and can be verified and/or refined via their photographic record. These considerations were very important to the Santiam Molalla because many of their most valuable crops were found at the highest elevations of their lands at the very times of the year they likely had the most traffic from neighboring Tribes and other visitors.

**Products** represents a short list of key products obtained from each species. This listing can be expanded greatly with Haskin (1934) and Anderson (2005).

Table C1. Local names and elevations of plants used by Santiam Molalla.

Plant Name	Type	Lowest	Highest	Product
Alder, Red	Tree	4000'	4200	Fuel, dye
Arrowwood	Shrub	3900'	4100	Tools, fuel
<b>Beargrass</b>	<b>Bulb</b>	<b>3100'</b>	<b>4700</b>	Food, weaving
<b>Blackberry</b>	<b>Vine</b>	<b>0800'</b>	<b>4500</b>	Food, dye
Blackcap	Shrub	3200'	3600	Food
<b>Bracken</b>	<b>Fern</b>	<b>0800'</b>	<b>4500</b>	Food, weaving
Bunchgrass	Grass	4000	4300	Fuel, weaving
<b>Camas</b>	<b>Bulb</b>	<b>0800</b>	<b>4000</b>	Food
Carex	Sedge	1000	1200	Weaving
Cattail	Root	1800	2900	Fuel, food
Cherry	Tree	2300	4200	Food, fuel
Chinquapin	Tree	3900	4100	Food
Chittum	Tree	1700	3600	Medicine, dye
Devil's Club	Shrub	3200	3400	Food, medicine
Gooseberry	Shrub	3900	4100	Food
Hazel	Shrub	1000	2900	Fiber, food
Huckleberry, "Blueberry"	Shrub	0800	2400	Food
<b>Huckleberry, Blue</b>	<b>Shrub</b>	<b>4200</b>	<b>4700</b>	Food
Huckleberry, Red	Shrub	1600	4600	Food
<b>Indian hellebore</b>	<b>Bulb</b>	<b>4100</b>	<b>4800</b>	Medicine, poison
Juncus	Rush	4200	4400	Weaving
Madrone	Tree	2200	2400	Fuel
Manzanita	Shrub	0900	4200	Fuel, food
Maple, Bigleaf	Tree	0900	1700	Weaving, fuel
Mushrooms	Fungi	2000	3600	Food, poison
Nettles	Herb	3500	3700	Fiber, food
<b>Oak, White</b>	<b>Tree</b>	<b>0800</b>	<b>1600 (?)</b>	Food, fuel
Oregon grape	Shrub	1200	2000	Dye, medicine
Pine, Ponderosa	Tree	800	4700	Nuts, pitch, fuel
Salal	Shrub	2400	3200	Food, fiber
Salmonberry	Shrub	1400	4500	Food
Skunk Cabbage	Widflower	0900	3900	Food
Strawberry	Vine	3400	4100	Food, dye
<b>Thimbleberry</b>	<b>Shrub</b>	<b>0800</b>	<b>4500</b>	Food, fiber
Willow	Shrub	0800	4200	Fiber, medicine
Wokas	Bulb	3300	4100	Food



Table C2. Latin names of plants used by Santiam Molalla.

Plant Name	Type	Latin Name
Alder, Red	Tree	<i>Alnus rubra</i>
Arrowwood	Shrub	<i>Holodiscus discolor</i>
<b>Beargrass</b>	<b>Bulb</b>	<b><i>Xerophyllum tenax</i></b>
<b>Blackberry</b>	<b>Vine</b>	<b><i>Rubus ursinus</i></b>
Blackcap	Shrub	<i>Rubus leucodermis</i>
<b>Bracken</b>	<b>Fern</b>	<b><i>Pteridium aquillinum</i></b>
Bunchgrass	Grass	<i>Festuca, spp.</i>
<b>Camas</b>	<b>Bulb</b>	<b><i>Camassia, spp.</i></b>
Carex	Sedge	<i>Carex, spp.</i>
Cattail	Root	<i>Typha latifolia</i>
Cherry	Tree	<i>Prunus emarginata</i>
Chinquapin	Tree	<i>Castanopsis chrysophylla</i>
Chittum	Tree	<i>Rhamnus purshiana</i>
Devil's Club	Shrub	<i>Oplopanax horridus</i>
Gooseberry	Shrub	<i>Ribes montigenum</i>
Hazel	Shrub	<i>Corylus cornuta</i>
Huckleberry, "Blueberry"	Shrub	<i>Vaccinium, spp.</i>
<b>Huckleberry, Blue</b>	<b>Shrub</b>	<b><i>Vaccinium, spp.</i></b>
Huckleberry, Red	Shrub	<i>Vaccinium parvifolium</i>
<b>Indian hellebore</b>	<b>Bulb</b>	<b><i>Veratrum viride</i></b>
Juncus	Rush	<i>Juncus, spp.</i>
Madrone	Tree	<i>Arbutus menziesii</i>
Manzanita	Shrub	Archostaphylos, spp.
Maple, Bigleaf	Tree	<i>Acer macrophyllum</i>
Mushrooms	Fungi	Spp.
Nettles	Herb	<i>Urtica dioica</i>
<b>Oak, White</b>	<b>Tree</b>	<b><i>Quercus garryanna</i></b>
Oregon grape	Shrub	<i>Mahonia aquifolium</i>
Pine, Ponderosa	Tree	<i>Pinus ponderosa</i>
Salal	Shrub	<i>Galtheria shallon</i>
Salmonberry	Shrub	<i>Rubus spectabilis</i>
Skunk Cabbage	Wildflower	<i>Lysichiton americanus</i>
Strawberry	Vine	<i>Fragaria, spp.</i>
<b>Thimbleberry</b>	<b>Shrub</b>	<b><i>Rubus parviflorus</i></b>
Willow	Shrub	<i>Salix, spp.</i>
Wokas	Bulb	<i>Nuphar polysepala</i>

## Appendix D. GPS Photo Points and Human Use Rankings

This appendix lists the 495 GPS readings taken during the course of this research and displays them on an index map of the study area (Map 7). Of this number, about 60 GPS points were recorded for which no photograph was taken; typically to map prairie perimeters or trail locations. Conversely, more than 70 of the points had series of panoramic photographs taken, in over-lapping sequences of three to 12 photos each. Many of these latter sequences were specifically taken to record ancient prairies or meadows, or to capture cultural landscape patterns of vegetation and major landmarks. Most of these sequences, particularly those by N. Lapham, were taken in such a manner as to be capable of being converted to QTVR files: [www.ORWW.org/Protocol/#QTVR](http://www.ORWW.org/Protocol/#QTVR)

**Title** column uses a combination of photograph number with visual description to formally name each GPS point and a corresponding photograph, and in such a way as to sort chronologically.

**Easting and Northing** are the GPS coordinates for each photo point that can be located on USGS Quadrangle maps.

**Elevation** provides data on whether trails are open or not, where desirable plants are located, and about when they'll ripen, or otherwise be available for harvest.

**CULTURAL PLANTS RANKING** were designated by survey teams, based on the following criteria. Color coding was added to each ranking for purposes of GIS predictive map construction.

**"P"** column ranks the surveyors' assessment on "Cultural Plants"

1. **Likely (Red).** Large numbers of cultural plants in solid patterns in accessible and regularly used locations that appear to have persisted since 1850, or longer.
2. **Possible (Yellow).** Numbers and location of cultural plants appear to be consistent with known uses, and it appears plants may have been used in this location since 1850, or earlier.
3. **Unknown (Green).** Isolated cultural plants or possible migration patterns make local uses uncertain or even unlikely.
4. **Impossible (Black).** Solid rock or other barrier to cultural plant growth.

**PREDICTIVE TRAIL RANKING** were designated by survey teams, based on the following criteria. Color coding was added to each ranking for purposes of GIS predictive map construction.

“X” stands for “Trail Crossing,” but is interpreted in the broader sense of apparent human use, including campgrounds, fishing holes, and ridgeline lookouts.

1. **Likely (Red).** Site appears to have strong likelihood of having been regularly used prior to 1850.
2. **Possible (Yellow).** Site could have reasonably been regularly used prior to 1850.
3. **Unlikely (Green).** There is no evidence or other indication the site was regularly used prior to 1850.
4. **Impossible (Black).** Site was likely infrequently used, if at all, before 1850.

Map 7 displays each GPS point as a circle, with the upper (north) hemisphere representing perceived cultural plant presence, in color as described above, and the southern hemisphere representing perceived human use ranking, also in color as described above. Note that the patterns of resulting red and yellow colors conform closely with Santiam Molalla use patterns named and described on Part 3 of this report.

Map 7. Index of GPS photo points in Owl Ridge Trails Project area.

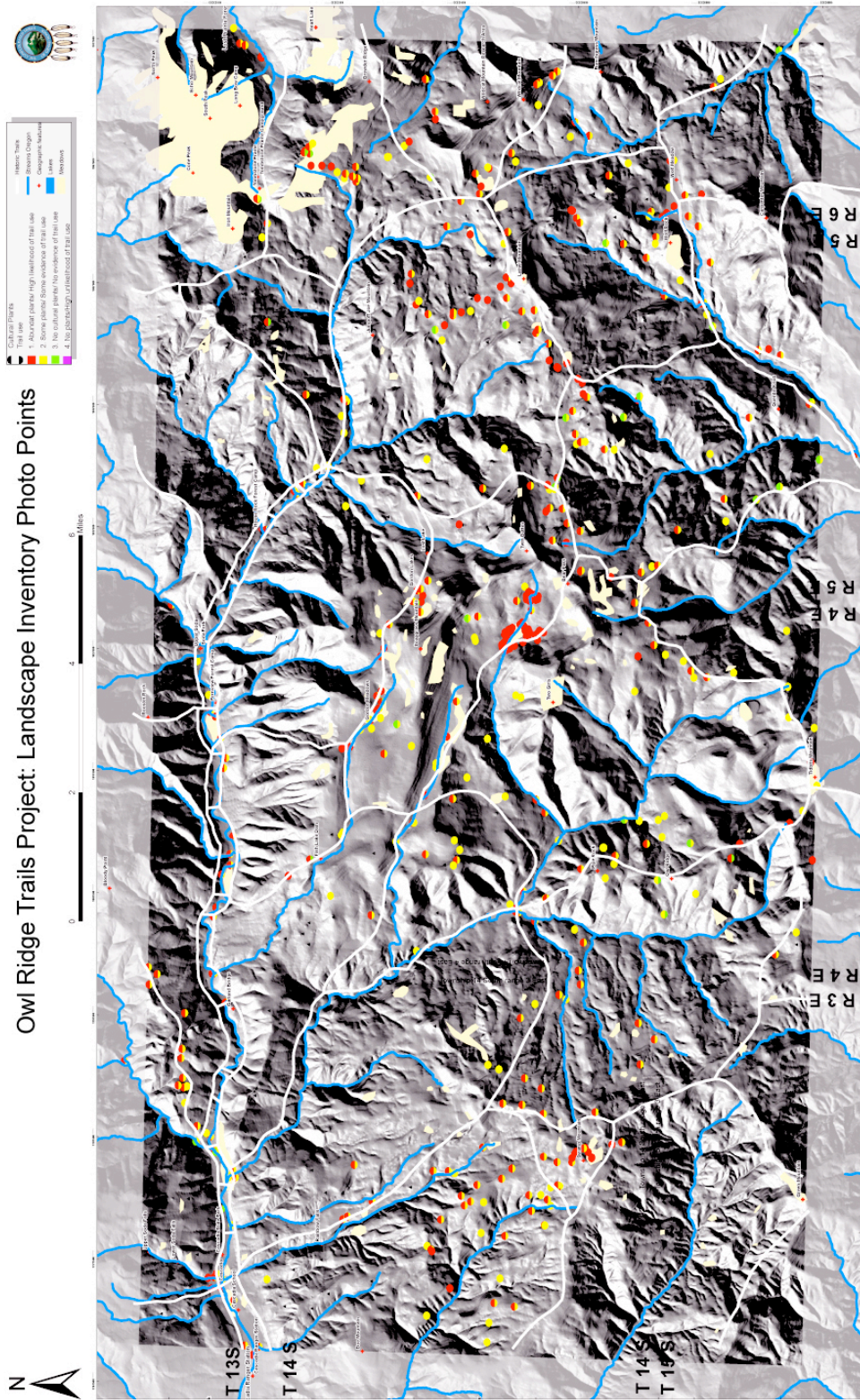


Table D1. Named GPS points with photo documentation and theoretical site-use rankings

<b>Title</b>	<b>Easting</b>	<b>Northing</b>	<b>Elevation</b>	<b>P</b>	<b>X</b>
181_River_Crossing	548283	4916354	1097	2	1
185_Fishing_Rock	549001	4916649	1103	2	1
186_Longbow_Gate	550420	4916721	1296	2	1
193_Purple_Salmonberry	551495	4914884	2975	1	1
195_Black_Creek	552437	4912220	3526	2	2
197_Beargrass	552917	4911818	3657	1	1
199_Red_Huckleberry	557584	4910420	3864	2	2
201_Two_Girls_Panorama	558899	4909203	4301	2	2
207_Bear_Pass	559320	4907828	4077	2	1
211_Beaver_Pond_Panorama	557297	4909622	3653	1	1
a001_Locked_Gate	543955	4907877	3503	2	1
a002_Waterhole	542964	4908232	3542	2	1
a003_Meadow	544921	4907270	4185	1	1
a005_Meadow	544773	4907527	4246	1	1
a006_Squirrel	544823	4907194	4186	1	1
a007_N_Meadow_View	544675	4907104	4253	1	1
a009_Pond	545030	4906606	4078	1	1
a011_Green_Mountain_Panorama	545094	4906365	4087	2	1
a021_Road_Block	545827	4907052	4012	2	1
<b>a021a</b>	545744	4908339	3654	<b>2</b>	<b>1</b>
a022_Swamp_Mountain	551128	4908450	2320	3	2
a023_Owl_Ridge_Panorama	551354	4904712	4356	2	2
a027_Washout	550817	4905479	2617	3	2
a028_Pine_Rock	551670	4905673	3377	3	2
a029_Pine_Rock	552437	4907053	3026	3	2
a032_Tidbits_Ridge	552283	4901825	4271	1	1
a033_Closed_Road	549904	4902677	3672	2	1
<b>a033a</b>	558569	4909098	4018	<b>1</b>	<b>1</b>
a034_Cherry_Tree	558670	4909161	4013	1	1
a036_Willow	558769	4909104	4041	1	1
a037_Meadow	558731	4909040	4041	1	1
a038_Spring_Source	558703	4908948	4037	1	1
a039_Pond	558665	4908864	4048	1	1
a040_Beargrass	558640	4908873	4042	1	1
<b>a040a</b>	558576	4908924	4023	<b>1</b>	<b>1</b>
<b>a040b</b>	558610	4909010	4052	<b>1</b>	<b>1</b>
<b>a040c</b>	558692	4909004	4059	<b>1</b>	<b>1</b>
<b>a040d</b>	558697	4909052	4059	<b>1</b>	<b>1</b>
<b>a040e</b>	558650	4909076	4033	<b>1</b>	<b>1</b>



<b>a040f</b>	558600	4909046	4032	<b>1</b>	<b>1</b>
<b>a040g</b>	558540	4909054	4029	<b>1</b>	<b>1</b>
<b>a040h</b>	558579	4909149	4058	<b>1</b>	<b>1</b>
<b>a040i</b>	558591	4908872	4022	<b>1</b>	<b>1</b>
<b>a040j</b>	557768	4908701	3731	<b>1</b>	<b>1</b>
<b>a040k</b>	557576	4908846	3713	<b>1</b>	<b>1</b>
<b>a040l</b>	557511	4909206	3718	<b>1</b>	<b>1</b>
<b>a040m</b>	557412	4909420	3663	<b>1</b>	<b>1</b>
<b>a040n</b>	557339	4909535	3639	<b>1</b>	<b>1</b>
a041_Beaver_Pond	557327	4909657	3617	1	1
a042_Meadow's_Edge	557345	4909711	3612	1	1
<b>a042a</b>	557404	4909734	3619	<b>1</b>	<b>1</b>
a043_Old-Growth_Stump	557430	4909734	3623	1	1
<b>a043a</b>	557487	4909681	3618	<b>1</b>	<b>1</b>
<b>a043b</b>	557452	4909660	3612	<b>1</b>	<b>1</b>
a045_Chittam	557492	4909626	3619	1	1
<b>a045a</b>	557539	4909636	3621	<b>1</b>	<b>1</b>
<b>a045b</b>	557630	4909608	3627	<b>1</b>	<b>1</b>
<b>a045c</b>	557684	4909671	3649	<b>1</b>	<b>1</b>
<b>a045d</b>	557737	4909662	3657	<b>1</b>	<b>1</b>
<b>a045e</b>	557806	4909577	3657	<b>1</b>	<b>1</b>
a046_Meadow	557754	4909520	3634	1	1
a047_Old_Stump	557860	4909485	3650	1	1
<b>a047a</b>	557948	4909298	3672	<b>1</b>	<b>1</b>
a048_Alder	557999	4909242	3684	1	1
a049_Gooseberry	557958	4909232	3675	1	1
a050_Huckleberry_Patch	557898	4909189	3686	1	1
a051_Meadow_Panorama	557800	4909167	3665	1	1
<b>a051a</b>	557833	4909083	3666	<b>1</b>	<b>1</b>
<b>a051b</b>	557775	4909059	3676	<b>1</b>	<b>1</b>
<b>a051c</b>	557727	4909071	3678	<b>1</b>	<b>1</b>
<b>a051d</b>	557679	4909129	3663	<b>1</b>	<b>1</b>
a056_Meadow's_Edge	557664	4909095	3665	1	1
a057_Animal_Den	557690	4908915	3684	1	1
<b>a057a</b>	557748	4908843	3693	<b>1</b>	<b>1</b>
a058_Meadow	557806	4908806	3705	1	1
a060_Owl_Creek_Mouth	550810	4909185	1635	3	1
a061_Oak_Trees	531054	4913911	1568	1	1
a064_Loon_Creek_Swamp	548080	4906043	2976	2	1
a065_No_Trespass	547688	4905633	3093	2	1
a068_Overgrown_Road	547051	4905964	3291	2	1
a069_Meadow	557241	4906330	4339	1	1
a073_Two_Girls_Panorama	556365	4906387	4094	2	2
a079_Ridge_Trail	556771	4904594	3798	2	1
a080_Road_Sign	556748	4904919	3816	2	2
a082_To_Tidbits_Mountain	556921	4904999	3842	2	1

<b>a083a</b>	557155	4905194	3832	<b>2</b>	<b>2</b>
<b>a083b</b>	557304	4905644	4007	<b>2</b>	<b>2</b>
a084_To_McKenzie_River	557535	4905942	4107	2	1
a086_Ridgeline_Prairie	558089	4906099	4224	2	1
a087_Two_Girls_Panorama	557992	4902642	3960	2	2
a093_Calapooia_Panorama	553169	4898783	4217	2	2
a096_Huckleberry	550467	4902175	3894	2	2
a097_Tidbits_Panorama	552636	4903652	4212	1	1
a106_Road_Block	552271	4903857	4357	3	1
a107_Tidbits	553191	4902424	4630	1	1
a109_Blue_Flower	553507	4902104	4631	2	2
a113_West	554147	4901772	5181	2	2
a116_Beargrass	554723	4901938	4736	1	1
a122_Ridgeline_Old-Growth	555587	4901882	4879	2	2
a123_Shasta_Fir	555830	4902524	4610	2	2
a125_Forest_Age_Classes	556596	4902571	4736	2	2
a127_Elk_Tracks	556906	4903932	4282	2	2
a132_Sign	546580	4900248	2344	2	1
a134_Campsite	558719	4911876	3906	2	1
a135_Bog_Site_Panorama	558595	4911742	3878	1	1
a143_Willow	558441	4911778	3918	1	1
<b>a146a</b>	558410	4911899	3963	<b>3</b>	<b>2</b>
a147_Stump	557856	4912554	4238	2	1
a148_Wet_Meadow	557620	4912779	4109	2	2
a151_Bracken_Fern	557261	4912668	4206	1	1
a152_Meadow_Panorama	557047	4912748	4177	2	1
a155_Meadow_Panorama	556183	4912700	4120	1	1
a162_Meadow	556055	4912812	4154	2	1
a163_Elk_Crossing	555905	4912693	4126	3	1
a165_Gordon_Meadows_Inlet	555749	4912745	4059	2	1
a166_Gordon_Meadows_Panorama	555694	4912807	4100	1	1
<b>a171a</b>	555236	4912918	4057	<b>2</b>	<b>2</b>
<b>a171b</b>	555506	4912701	4048	<b>2</b>	<b>2</b>
<b>a171c</b>	555201	4913197	4061	<b>2</b>	<b>2</b>
<b>a171d</b>	555464	4912986	4049	<b>2</b>	<b>2</b>
<b>a171e</b>	554615	4912590	4320	<b>2</b>	<b>1</b>
<b>a171f</b>	554416	4911282	3735	<b>2</b>	<b>2</b>
<b>a171g</b>	554318	4911282	3727	<b>2</b>	<b>2</b>
<b>a171h</b>	553617	4911535	3705	<b>1</b>	<b>1</b>
<b>a171i</b>	555091	4911034	3763	<b>1</b>	<b>1</b>
a172_Meadow_Panorama	554761	4913445	4039	1	1
<b>a176a</b>	554717	4913640	4048	<b>1</b>	<b>1</b>
a177_Scarred_Snag	552620	4913552	3840	3	2
<b>a177a</b>	552555	4913588	3815	<b>2</b>	<b>2</b>
a178_Road_Crossing_Trail	551923	4914355	3697	3	1
a217_Cascadia_Cave	543120	4916295	774	3	1

a220_Cascadia_East	541320	4916226	852	1	1
a222_Canyon_Creek_Mouth	543918	4916140	907	2	2
a223_Trout_Creek	551963	<b>4961352</b>	1245	2	1
a224_No_Trespassing	557264	4917206	1424	2	2
a225_Snow_Creek	565311	4915821	3601	3	1
a226_Wagon_Trail	568369	4916147	4238	3	1
a227_Iron_Mountain_Trailhead	567772	4915900	4108	2	1
a228_Dry_Creek_Bed	563524	4914806	2996	2	1
a229_Hanging_Meadow	560028	4908204	4261	1	1
a230_Horsefly_Panorama	564565	4908769	4543	1	1
a234_Private_Meadow	564386	4908544	4370	1	1
a235_370_Road	566607	4909902	4682	3	1
a236_Small_Creek	569049	4911872	4097	3	2
a237_Wet_Meadow	569318	4910414	4181	1	1
a238_Camp_Swine	568323	4908301	4041	1	1
a239_Wolf_Pond	568828	4905097	3616	1	1
a240_Mann_Creek	566317	4905958	2772	1	1
a242_Cook_Creek_Campsite	561292	4900080	1758	1	1
a243_Hole	565538	4904714	2488	2	3
a244_Cabin	566108	4905014	2695	1	1
a248_Wolf_Creek_Panorama	566126	4904957	2634	2	1
a914_Canyon_Creek_Panorama	543918	4916144	907	2	3
a925_Powderhouse	0544101	4916035	918	2	1
b015_Fishing_Rock	0548998	4916705	1269	2	1
b017_Bear_Pass	0559342	4907813	4137	2	1
b020_Road_636	0560325	4907867	4376	2	1
b022_Road_1516	0560074	4908553	4635	2	1
b027_Latiwi_Trail_Panorama	0560513	4908197	4314	2	1
b050_Twin_Butttes_Panorama	0560881	4908642	4183	2	1
b068_Intersection_1509_X_	0560872	4908328	4251	2	1
b070_Twin_Butttes_Panorama	0561355	4908536	4097	2	2
b078_Intersection_1509_X_2044	0561640	4908479	4015	3	1
b081_Road_535_Sign	0561346	4908663	3966	2	2
b082_Beargrass	0561459	4908717	4002	1	1
b085_View	0560786	4908737	4179	1	1
b210_Intersection_260_X_2044	0561423	4909143	4045	2	1
b212_Twin_Butttes_Panorama	0562497	4908022	3963	2	2
b223_Intersection_1509_X_	0562549	4907928	3963	2	1
b229_View	0562745	4908061	4018	2	1
b234_Headwaters_Panorama	0563146	4908311	4009	2	3
b244_Road_545	0563322	4908146	4048	2	1
b245_Water	0563682	4907800	4153	2	1
b247_Alder	0563754	4907896	4146	1	1
b250_Wolf_Rock	0534085	4907741	4238	1	1
b253_Blazed_Tree	0564029	4907929	4199	1	1
b255_Intersection_1509_X_	0564127	4908043	4212	1	1



b260_Meadow	0564509	4908330	4297	1	1
b262_Meadow_Panorama	0564404	4908570	4376	1	1
b273_Intersection_1509_X_1517	0564987	4908806	4481	2	1
b274_Intersection_805_X_565	0565238	4909121	4534	2	1
b278_Meadow	0565325	4909070	4524	2	1
b281_Old_Clearcut	0565808	4909181	4504	2	1
b283_Meadow	0566460	4909776	4501	1	1
b284_Spring	0566606	4909864	4793	2	1
b286_Intersection_1509_X_370	0566606	4909864	4793	2	1
b288_Intersection_1509_X_	0567450	4909985	4534	2	2
b289_Intersection_1509_X_15	0567746	4909900	4455	2	1
b291_Meadow	0568668	4910636	4284	2	1
b292_Latiwi_Mountain	0568502	4911093	4291	2	1
b294_Intersection_15_X_1598	0569527	4912930	3986	2	1
c001_Hackleman_Entrance	0572250	4916722	3559	2	1
c005_Purple_Mushroom	0572206	4916592	3517	2	1
c013_Trail_Intersection	0571922	4916183	3618	1	1
c014_Brake	0571911	4916167	3366	1	1
c017_Indian_Creek	0571958	4916159	3513	1	1
c018_Intersection_15_X_055	0572627	4916890	3474	2	2
c019_Tombstone_Pass	0568386	4916182	4222	2	1
c020_Intersection_15_X_20	0567420	4916022	4137	2	2
c022_Old_Trail	0568887	4913723	4205	2	1
c024_Old_Trail	0568967	4913692	4058	2	1
c026_Old_Trail	0569011	4913816	4251	2	1
c027_Old_Trail	0568960	4914014	4255	2	2
c028_New_Trail	0569073	4913990	4166	2	1
c029_Browder_Ridge_Trailhead	0569254	4913741	4110	2	1
c038_Mushrooms	0569105	4914196	4242	2	2
c040_Brake	0569243	4914348	4425	1	1
c042_Brake_Panorama	0569256	4914585	4491	1	1
c053_Brake_Panorama	0569248	4914855	4803	1	1
c061_Brake_Panorama	0569549	4914896	4963	3	1
c063_Intersection_15_X_1598	0569521	4912956	3900	2	2
c081_Hangout_Spot_Panorama	0569613	4915019	5203	3	1
c082_View_Panorama	0569571	4915038	5259	3	1
c096_Off_Trail	0569718	4914921	5081	2	1
c097_Browder_Ridge_Trail	0569803	4914829	5055	2	2
c105_Unmarked_Intersection	0569809	4912548	3818	2	2
c110_Wildcat_Mountain	0571496	4912067	3612	2	1
c115_Water	0569923	4912427	3815	1	1
c119_Wildcat_Mountain	0570504	4911787	3704	1	1
c122_Turnaround	0570692	4911804	3786	2	1
c124_Douglas-fir_Plantation	0568480	4911094	4245	2	1
c127_Meadow	0568859	4910600	4212	1	1
c129_Old_Trail	0569173	4910750	4127	2	1

c130_Road_Intersection	0569340	4910447	4202	2	2
c131_Intersection_2655_X_590	0570936	4909235	4422	2	2
c133_Wildcat_Panorama	0571785	4908791	4698	2	1
c150_Wildcat_Panorama	0571680	4908902	4721	2	1
c164_Wolf_Rock	0571496	4909229	4914	2	1
c172_Wildcat_Trailhead	0571452	4909289	4983	2	1
c173_Intersection_15_X_	0569505	4909757	4048	2	2
c175_Old_Trail	0569714	4909864	4094	2	1
c176_Intersection_797_X_	0570169	4908412	3809	2	2
c177_Cadenza_Creek_Sign	0570539	4908304	3746	2	1
c178_Campsite	0568141	4908194	4002	2	1
c182_Water	0568029	4908109	3936	2	1
c189_Bobcat_Rock	0567538	4907446	3795	2	3
c197_Beargrass_Meadow	0568337	4908337	4009	1	1
c199_Bunchgrass_Mountain	0569549	4906949	3572	2	2
c200_Intersection_15_X_	0569642	4905902	3339	2	1
c201_Intersection_15_X_618	0568976	4905912	3307	2	2
c207_Wolf_Rock_Panorama	0568356	4906340	3549	2	1
c211_Wolf_Rock_Beauty_Shot	0568245	4906382	3576	2	2
c213_Road_745	0567726	4906200	3717	2	1
c214_Wolf_Rock	0567562	4906211	3700	2	2
c227_Lily_Pond_Panorama	0568509	4905772	3352	1	1
c229_Road_630	0568236	4906054	3362	2	1
c231_Road_631	0568338	4905955	3402	1	1
c233_Road_612	0566667	4905561	2982	2	2
C235_Wolf_Rock	0567532	4907003	3536	2	1
c236_Road_612	0567205	4906425	3211	2	1
c239_Mann_Creek_Culvert	0566270	4905949	2759	2	1
c242_Wolf_Rock	0565831	4904875	2644	2	2
c243_Intersection_15_X_1516	0563718	4902198	2286	2	3
c244_Five-Way_Intersection	0569659	4905810	3280	2	1
c248_Intersection_1506_X_1508	0568793	4905509	3408	2	1
c249_Wolf_Rock	0568272	4905410	3320	2	1
c251_Water	0568028	4905152	3330	2	1
c252_Intersection_1508_X_426	0565016	4903304	2417	1	1
c254_Road_Block	0564870	4903010	2309	2	1
c257_Road_1508	0564981	4903565	2358	2	1
c262_Road_1508	0567139	4904826	3087	2	1
c265_Wolf_Rock	0569227	4907422	3726	2	1
c274_Road_370_Panorama	0566372	4910042	4478	1	1
c284_Jump_Off_Joe_Panorama	0566066	4910605	4402	1	1
d001_Dead_Tree	0565615	4911203	4583	2	1
d004_Fall_Colors_Panorama	0565687	4911199	4629	2	1
d018_Road_351	0565628	4911824	4330	2	1
d019_Douglas-fir_Plantation	0565858	4912133	4268	1	1
d022_Jump_Off_Joe_Panorama	0566382	4912303	4183	1	1

d032_Forest_Litter	0566622	4912274	4176	2	1
d034_Conifer_Reprod	0565950	4912064	4202	2	2
d035_Conifer_Forest	0565242	4911635	4415	2	3
d036_Old-Growth_Pine	0565363	4911406	4333	1	1
d037_Brake_Panorama	0565703	4910996	4491	1	1
d050_Intersection_367_X_	0565738	4910769	4497	2	2
d051_Road_367	0564436	4911139	3838	2	4
d052_Road_367	0564807	4910877	3786	2	4
d053_Road_367	0565267	4910605	4018	2	4
d054_End_Of_Road_Panorama	0564987	4911457	4176	2	2
d063_Intersection_422_X_340	0567835	4911425	3976	2	1
d065_Wetland_Meadow	0567650	4910834	4084	1	1
d069_Latiwi_Mountain	0566026	4910353	4386	1	1
d070_Bottomland_Prairie	0566092	4909879	4310	1	1
d074_Bottomland_Prairie	0566092	4909879	4310	2	1
d075_Latiwi_Mountain_Panorama	0565414	4909879	4094	2	3
d085_Latiwi_Creek	0565770	4909487	4205	2	1
d088_Off-Road_Vehicle	0558219	4906723	4248	3	3
d090_Road_529	0557969	4906260	4310	3	3
d093_Bracken_Fern	0558188	4906722	4317	3	3
d094_Meadow	0558577	4906452	4455	2	1
d096_Intersection_1509_X_1513	0559201	4907069	3992	1	1
d099_Twin_Butttes_Panorama	0561415	4908526	4005	2	3
d124_Road_2044_Panorama	0562330	4909820	4248	2	2
d127_Old_Road	0561317	4910328	4114	2	1
<b>d128_Conifer_Reproduction</b>	0561000	<b>490996</b>	4261	2	2
d135_Twin_Butttes	0560401	4910889	3710	1	1
d137_Gordon_Lakes_Trailhead	0558974	4911624	3969	2	1
d138_Gordon_Lake	0558760	4911803	3618	2	1
d139_Gordon_Lakes_Area	0558184	4911789	3874	2	1
d145_Gordon_Meadow	0558453	4911996	3858	2	1
d150_Possible_Pass	0561079	4911958	3277	2	1
d151_Road	0558534	4909398	4279	2	1
d154_Intersection	0558312	4909025	3996	2	1
d157_Water	0558117	4910357	4160	2	1
d161_Road_475	0557506	4910395	3835	2	2
d163_Intersection_365_X_367	0555977	4910822	3897	2	1
d164_Logging	0554830	4911907	4327	2	2
d166_Road_367	0555364	4912290	4376	2	3
d169_Sheer_Edge	558060	4910609	4068	2	3
d173_Intersection_2032_X_428	0551028	4913814	3106	2	2
d176_Intersection_2044_X_2032	0550575	4912787	3320	2	1
d177_Road_145	0552917	4911790	3635	2	2
d179_Two_Girls	0552507	4910767	3963	2	2
d181_Intersection_1498_X_145	0552137	4911479	3825	2	1
d182_Mountaintop_Panorama	0552014	4910697	3723	2	1

d187_Rocky_Plateau_Panorama	0551878	4910772	3805	2	2
d198_Unkown_Road	0553543	4910840	3448	2	1
d199_National_Forest_Boundary	0554086	4910500	3116	2	2
d201_Intersection_2024_X_145	0553643	4909533	3008	2	2
d202_Two_Girls_Panorama	0555068	4910021	3179	2	2
d205_Intersection_2024_X_250	0556036	4409936	3185	2	2
d207_Two_Girls_Creek	543918	4909940	3254	2	1
d210_Intersection_250_X_251	0556174	4909346	<b>3330</b>	2	2
d212_Forest_Panorama	0556128	4909216	3536	2	2
d224_Intersection_2024_X_210	0553272	4908532	2309	2	1
d229_Creek	0553588	4908759	2372	2	1
d231_Road_Block_Panorama	0554089	4908457	2867	3	3
d239_Creek_Panorama	0551289	4909019	1732	2	1
d248_Intersection_2022_X_2026	0550948	4909333	1679	2	2
d249_Intersection_2026_X_300	0550851	4109106	1699	2	2
d250_Road_300	0551131	4908435	2329	2	1
d252_Road_300	0551887	4907594	3008	2	1
d253_Two_Girls_Panorama	0552435	4907036	3021	2	2
d258_Intersection_300_X_307	0552242	4906745	2998	2	1
d261_Intersection_307_X_312	0552038	4906767	3152	2	2
d263_Road_312	0551677	4906976	3270	2	2
d266_Road_312	0552446	4906260	2910	3	3
d268_Owl_Ridge_Panorama	0552565	4905976	2860	2	1
d275_Pass	0552745	4905592	2749	2	2
d277_Intersection_2022_X_300	0553169	4905699	2644	2	2
d278_Intersection_2022_X_250	0553274	4905547	2729	2	2
d280_Road_300_Camp	0552613	4904884	3507	2	3
d281_Water	0553134	4906173	2375	2	2
d283_Water	0553155	4906545	2102	2	3
d285_Canyon_Creek	0552575	4908170	1814	2	2
e001_Soda_Creek	0541417	4916425	892	2	1
e004_Campground_Panorama	0541509	4916369	994	2	1
e0115_Soda_Creek_Crossing	0541396	4916574	908	1	1
e017_Cabin_Creek	0541167	4916263	849	1	1
e018_Cascadia_North_Trail	0541135	4916482	938	1	1
<b>e020_Gate</b>	0539891	<b>491558</b>	810	2	1
e023_Dump_Panorama	0539734	4915611	800	2	1
e038_Shot_Pouch_Butte	0539504	4915414	757	2	1
e044_Mouse_Creek_Panorama	0539712	4915252	859	2	1
e047_Cascadia_Post_Office	0540860	4915914	872	2	1
e050_Dobbin_Creek_Panorama	0541365	4916214	793	2	1
e065_Swimming_Hole	0540686	4916032	862	2	1
e067_Wolf_Creek	542727	4916019	990	2	2
e073_Canyon_Creek	0543976	4916087	839	2	2
e074_Elephant_Mountain	0543920	4915972	935	2	1
e075_Meadow_Panorama	0544555	4916442	948	2	1

e080_Waterfalls	0544625	4916523	895	2	1
e085_South_Santiam_River	0544544	4916476	918	2	3
e088_Moose_Creek	544925	4916621	994	2	1
e089_Intersection_2025_X_2027	545007	4916726	1013	2	2
e090_Moose_Creek_Beheaded_Salmon	0544789	4916979	984	2	3
<b>e094_Moose_Creek_Campsite</b>	<b>054572</b>	4917829	1125	2	1
e095_Moose_Creek	0546752	4918827	1092	2	1
e096_Large_Bench	0545179	4916965	1249	2	1
e097_530_Gate	0545744	4917289	1394	2	2
e097_Intersection_541_X_	0546162	4917248	1650	2	2
e099_Road_539	0546131	4917331	1774	2	1
e101_Road_541_Unknown_Plant	0546176	4917470	1738	2	1
e104_Ridgeline_Crossing	0546371	4917362	1725	2	1
e110_Road_2027_Spring	0546861	4917414	2253	2	1
e111_Intersection_2027_X_705	0547094	4917400	2040	2	1
e112_Road_2027_Panorama	0547989	4917359	2129	2	1
e122_Ridgeline_Road	0548674	4918270	2381	2	1
e125_Ridgeline_Meadow	0548940	4918076	2358	2	1
e127_Ridgeline_Intersection	0549108	4918300	2106	2	1
e130_Old_Bridge	0550648	4916660	1158	2	1
e131_Meadow	0551477	4916548	1046	2	1
e132_River_Crossing	0551718	4916338	1056	2	1
e135_Trout_Creek	0551994	4916351	1210	2	1
e137_Closed_Gate	0552444	4916294	1660	2	1
e138_Old_Santiam_Wagon_Road	0554137	4916573	1410	2	1
e141_Rooster_Rock	0554391	4916526	1384	2	1
e142_Intersection	0554882	4916672	1484	2	1
e145_Fernview_Intersection	0555528	4916949	1259	2	1
e149_Old_Wagon_Road_Crossing	0555418	4916817	1427	2	1
e151_Rooster_Rock_Trailhead	0555952	4917003	1345	2	2
e152_Road_2041	0556790	4917312	1466	2	2
e156_Soda_Fork_Bridge	0558178	4917998	1617	2	1
e157_House_Rock_Campground	0560117	4915715	1601	2	1
e159_Bridge_Crossing	0561042	4914975	1771	2	1
e160_Wagon_Road_Trailhead	0561114	4915030	1811	2	1
e161_Sevenmile_Trailhead	0561305	4914824	2037	2	1
e167_Jump_Off_Joe_Panorama	0563450	4913831	2372	2	1
e178_Madrone_Panorama	0563393	4913786	2349	2	1
e186_Trail_Marker_5	0563437	4913858	2362	2	1
e189_Sevenmile_Trail	0563019	4913905	2112	2	2
e191_Sevenmile_Trail	0562599	4913830	2125	2	2
e195_Sevenmile_Trail	0561763	4914203	2175	2	2
e199_Sevenmile_Trail	0561703	4914486	1991	2	2
e200_Landmark	0560770	4913730	2381	2	2
e201_Reprod_Panorama	0561424	4913358	2457	2	2
e204_Old_Cascades_Panorama	0562003	4911741	3372	2	2

e214_Quentin_Knob_Panorama	0559345	4906315	3779	2	1
e215_Quentin_Knob	0559496	4906050	3799	2	2
e216_Road_514	0559526	4905909	3769	2	1
e217_Road_514	0560428	4905440	3648	2	1
e218_Reprod_Panorama	0560681	4904242	3287	2	2
e223_Wolf_Rock	0561238	4904302	3093	2	1
e226_Viewpoint	0561244	4903499	3264	2	3
e228_View	0561584	4902928	3261	2	3
e231_Scree	0562293	4901954	2309	2	3
e232_Intersection_15_X_1513	0562106	4900675	1784	2	1
e233_Cook_Creek	0562474	4901035	1827	2	1
e236_Road_1516_Panorama	0563289	4903742	2805	2	1
e240_Spot_Fire	0562351	4904687	2883	2	2
e242_Road_1516	0563643	4906521	3080	2	1
e248_Cave	0563740	4906486	3428	2	3
e255_Rock_Cutbank	0563206	4906873	3293	2	3
e256_Giant_Rock	0562384	4907080	3651	2	2
e261_This_Rock_Has_To_Have_A_Name	0562387	4907322	3920	2	1
e262_Road_1516_Panorama	0562561	4907809	3923	2	2
e265_Intersection_15_X_1516	0563675	4902252	2250	2	1
e267_Road_2054	0572940	4902843	2404	2	3
e269_View	0572479	4903271	2427	2	3
e270_Conifer_Reprod	0571726	4904713	2919	2	2
e271_Ridgeline_View	0571522	4904877	2946	2	1
<b>e273_Road_2654</b>	<b>0570209</b>	<b>4907942</b>	<b>3687</b>	<b>2</b>	<b>1</b>
e275_Dobbin_Creek_Road	0541401	4915104	1207	2	2
e276_Blocked_Road	0542960	4913259	1748	2	1
e277_Road_750	0543033	4913145	1811	2	1
e278_Intersection_810_X_	0543429	4912544	2011	2	1
e279_Logged_Lookout_Panorama	0544328	4913018	2237	2	1
e290_Road	0544231	4911043	2716	2	1
e291_Intersection	0544242	4910668	2680	2	1
e293_Spring	0544194	4910506	2890	2	2
e305_Swamp_Mountain_Panorama	0543396	4910239	3244	2	1
e311_Swamp_Mountain_Panoramas	0543633	4910326	3257	2	1
e322_Ridgeline_Trail	0543499	4910089	3349	2	1
e324_View	0543491	4909762	3467	2	2
e327_Intersection	0544090	4909330	3454	2	1
e328_Intersection_SW-500_X_	0544355	4909084	3441	2	1
e331_Meadow	0544547	4907962	3979	2	1
<b>e338_Road</b>	0544559	4907595	<b>XXX</b>	2	1
e345_Boomer_Panorama	0544667	4907591	4189	1	1
e353_Road_SW-1560	0544822	4907499	4268	1	1
e364_Road_SW-1550_Panorama	0544912	4907314	4209	2	1
e366_Swamp_Mountain_Panorama	0544689	4907097	4245	1	1
e378_Road	0544675	4908306	3717	2	1

e379_Locked_Gate	0543968	4907935	3628	2	1
e382_Quarry	0543913	4908102	3595	2	2
e383_Water_Source_Intersection	0543717	4908344	3320	2	2
e390_Water	0543606	4908174	3425	2	1
e391_Water_Storage	0542961	4908216	3549	2	2
e397_Water	0543455	4908094	3461	2	2
e398_Ripe_Berries	0543703	4908640	3280	2	1
e404_Water_Source_Intersection	0542723	4909802	2939	2	2
e405_Intersection_SW-370_X	0542666	4909208	2808	2	1
e406_Blocked_Road	0543312	4908564	3162	2	1
e410_Quarry	0541601	4909297	2877	2	2
e411_Old_Road_Intersection	0540906	4908917	2995	2	1
e414_Intersection	0540981	4909429	2870	2	1
e416_Shrub_Opening	0540487	4909537	2703	2	2
e419_Road_390E_Turnaround	0539998	4909572	2778	2	2
e421_Intersection_390_X	0543026	4910821	2982	2	1
e423_Intersection	0542357	4911139	2893	2	2
e425_Intersection	0542271	4911037	2913	2	1
e427_Cattail_Marsh	0542230	4911017	2890	1	1
e428_Road_Block	0540614	4911098	2513	2	2
e429_Upland_Prairie_Panorama	0541315	4910539	2460	1	1
e435_Intersection_SW-360_X_SW-600	0544860	4909825	3421	2	1
e437_Intersection_SW-1200_X	0545973	4909362	3605	2	1
e438_Road_1200_View	0546822	4909483	3618	2	2
e441_Ponderosa_Pine_Panorama	0546923	4909759	3651	2	2
e450_Intersection_CY-300_X	0545953	4908881	3618	2	1
e451_Intersection_CY-300_X_CY-332	0546377	4908412	3523	2	1
e452_Road_390	0546621	4908838	3257	2	1
e453_Intersection_CY-300_X	0548119	4908987	2795	2	1
e461_Intersection	0548481	4908632	2568	2	2
e462_Intersection_300_X_CY-220	0548728	4908040	2454	2	1
e463_Boundary_Creek	0548621	4907862	2349	2	2
e467_Intersection_330_X_300	0549001	4907519	3467	2	1
e469_Intersection_2026_X_280_X_320	0549349	4907578	2349	2	1
e471_Road_2026	0550052	4907475	2211	2	1
e472_Pine_Rock	0550371	4907702	1860	2	2
e476_Water	0550550	4908699	1702	2	1
e477_Intersection_2026_X_2022_Panorama	0550757	4909114	1407	2	1
e489_Creek	0550875	4909163	1630	2	1
e491_Road_Closed	0549715	4911628	1499	2	2
e493_Owl_Creek_Mouth	0550779	4909195	1722	2	1
e494_Evening_View_Panorama	0552271	4910627	2568	2	2
<b>Total = 495 GPS Points</b>	<b>Easting</b>	<b>Northing</b>	<b>Elevation</b>	<b>P</b>	<b>X</b>